



Wiring Devices Catalogue



Designed for life!



About us

Honeywell Electrical Devices and Systems India Limited is a part of Honeywell International. Honeywell International is a \$33 billion diversified technology and manufacturing leader, serving customers worldwide with aerospace products and services; control technologies for buildings, homes and industry; automotive products, turbochargers and speciality materials. In India the company is over a decade old and has revolutionised the electrical industry by introducing the concept of modularity and cable management systems. MK is the leading wiring devices accessories brand in Honeywell Electrical Devices and Systems India Limited

MK has been delivering electrical connectivity and safety since 1919 and is the world's foremost manufacturer of electrical and data connectivity products and solutions. A pioneer in the field with several innovations to its credit, MK has established a reputation for the highest standards in quality, safety and reliability.

With over 6000 products in the portfolio, MK meets every aspect of electrical installation from a simple plug to a highly sophisticated cable management and circuit protection system.

Growing fast with a Clear focus on 'Customer Delight', MK is known to offer Industry best service standards through 'MKTeam' - a pool of trained Professional spread across the country offering value-added services enjoying excellent relationship with Specifiers (Architects, Interior Designers, Electrical Consultants, Builders and Contractors)

Innovative design features really make a difference. MK wiring accessories incorporate a number of innovative features across the range, making them the choice for all commercial and domestic applications.





Wraparound



MK's flagship brand of modular switches is Wraparound. Wraparound is a world-class range of wiring devices that incorporates features hard to come by. Contemporary in shape and available in a variety of Color Options, Wraparound is amazingly good looking. Wraparound is manufactured using superior engineering plastic. This makes it fire retardant and highly resistant to impact, thereby increasing longevity. With the new Metallic Grey color option added to the stable, the aesthetic enhancement is guaranteed.

Engineering plastic also ensures that the plates never lose their glossy finish. Completely modular in design, Wraparound gives maximum flexibility in choosing any combination of switches, sockets and accessories to suit specific user requirements. What's more, it is very easy to install or replace. There is a convenient lever at an angle of 15 degrees making its removal easy without leaving scratch marks neither on the plate nor on the wall.

The smooth curvature of SnapOn plates eliminates dust accumulation. To suit varied interiors Wraparound is available in a range of pleasing colors and in a variety of modules that include 1M, 2M, 3M, 4M, 5M, 6M, 8M, 10M, **NEW** 10M Horizontal & 16M.

WraparoundPlus



Innovation in tune to customer needs has always been synonymous with MK. Introducing the all new range of WraparoundPlus Front Plates. Contemporary in design these plates have square ends that perfectly lend itself to utmost flexibility in choosing any combination of switches, sockets & accessories. Manufactured using superior engineering plastic, the new range guarantees longevity being fire retardant and highly impact resistant. WraparoundPlus offers 10 module horizontal, 12 module front plate besides the regular modules. Easy to install or replace the new WraparoundPlus is a perfect blend of style & functionality. Check out the latest Offwhite & Grey color options. 6M & 18M plates are our new infills in this range.



Antiquity



Antiquity range of SnapOn front plates bring a unique mood and feel to your interiors, a look that is rich in aesthetics without compromising on ergonomic values and is available in Gold, Chroma, Pearl and the newly launched Brushed Steel. The Antiquity range of SnapOn front plates are made from stainless steel which does not rust thus creating luxurious interiors in hotels, reception / conference halls, corporate offices and bungalows. Designed to match and emphasize any kind of decor, they're sure to enhance the aesthetic appeal of your interiors. The Antiquity range of Front Plates are available in 1M, 2M, 3M, 4M, 5M & 8M.

Ivory

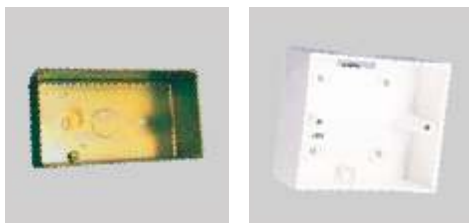
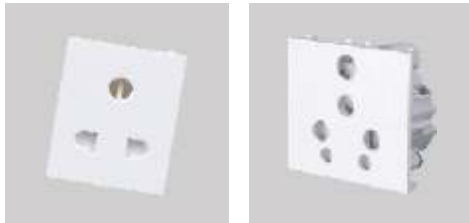


Ivory wiring accessories are designed to perfectly complement modern interiors offering an unobtrusive and sophisticated look, in line with today's interior design.

Ivory caters to a variety of needs in apartments, small bungalows, medium sized homes, hospitals /clinics, small offices, showrooms and educational institutions. It is a new concept that combines beauty, versatility with economy of space and cost. Ivory range of front plates are available in 1M, 2M, 3M, 4M, 5M, 8M & 12M. What's more the Ivory range is available in White & Ivory Colors.



Accessories



Wraparound Switches

The use of electricity cannot be taken for granted. At home and at work you use it everyday. At the flick of a switch, we all have convenient, easy access to electricity. Switches, plugs and sockets make the vital connection to the electrical supply. Selecting MK sockets and switches means you will have the safest and the most reliable available. MK Switches are available in 6A, 10AX, 16A, 20A & 32A ratings with and without indicators and in one way / two way and bell push types. Also available A/C motor starter switches in 6-10A, 9-15A & 16-25A ratings. All Wraparound Switches conform to IS 3854:97.

Wraparound Sockets

MK sockets, unlike any other, are the safest because of a unique "child resistant shutter system". They are technically designed to inhibit access to electricity, unless all three pins of a standard plug are in position. Available in 6A, 13A & 16A ratings. Designed to the requirements of 1293:88. We have introduced 6/16A socket in 2M size for optimum space utilisation.

Wraparound Data / Communication Jacks

MK offers a considerable range to meet the needs of increasing advances in technology and changes in lifestyles. There are a whole range of communication jacks for interactive digital voice and data communication services. RJ11-1 line, RJ11-2 line, RJ45 Cat 6 and Twin RJ 11 compliant to FCC part 68.

Mounting Boxes

In order to accommodate all types of accessories and front plates, MK offers metal as well as Engineering Plastic mounting boxes. To suit varied interior requirement, mounting boxes are available in both flush and surface mounting. All metal boxes are made off mild steel with thick Zinc plating with yellow passivation which complies with resistance and rust test as per IS 3854:1997.

Wraparound Support Accessories

To support various other needs, are available a range of accessories

- Electronic Chime - A melodious buzzer to draw attention
- Lite Kontrol (Dimmers) - to brighten and dim tungsten lamps to suit your mood Designed for optimum speed control over fluctuation voltage bands in 4 settings
- Fan Speed Control popularly known as BreezKontrol is fully hum less, ensures optimum fan speeds are obtained & maintained for all positions.
- Foot Lamp - To serve as a passage light way for corridors, lobbies, staircase, gardens, guestrooms of hotels, portico, car parking spaces etc.
- TV Coaxial outlet- for enhanced quality reception of TV signals
- Modular fuse units-to protect individual circuits
- 16A & 25A Mini Trip switches in modular range - 2M.

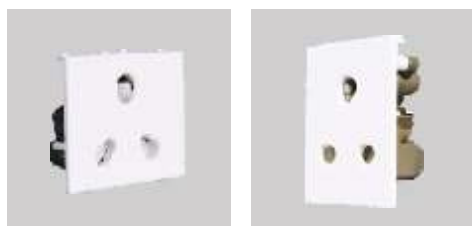


Accessories



Ivory Switches

MK Ivory is a new concept that combines beauty and versatility with economy of space and cost. Designed to suit the needs of apartments, small offices & shops, educational institutions, hotels and hospitals, the Ivory range offers the flexibility of choosing from an extensive range of Switch options. Indicator switches are also a part of this range. All Ivory Switches conform to IS 3854:97.



Ivory Sockets

MK Ivory sockets come with safety shutters and its unique design allows easy entry of two pin plugs without the need to force the earth terminal by unsafe means. The sockets are also tested to IEC Standards and conform to IS 1293: 1988.



Ivory Support Accessories

The fan speed control is in a single module size and saves space. The electronic regulator allows optimum speed control, as per the customer need and allows efficient operation. The ability of the regulator to work across a wide voltage range results in power saving. The range is complete with adequate support accessories like telephone and computer jack and mounting boxes upto CAT6 capability.

New Infills

Shaver Socket

Dimension: Height : 50.8 mm / Width : 81.2 mm / Depth : 50 mm



W26529

- Module** : 4M
- Function** : Compatible with most internationally available shavers. Accommodates wide range of 2 pin round and flat pin plugs, compatible to International available shavers.
- Features** : Choice of 230V for 115V output socket posuction. Intergrial transformer provides high degree of isolation from mains. Earth terminal provided.

Electrical Specification:

- Rated Power : 15 VA
 Input Voltage : 230V
 Output Voltage : 115 & 230 V
 Nature of Supply : AC only
 Terminal Capacities : 4 sq. mm wire to be used.

Single Phase Motor Starter (6-10 A) / (9-15A) / (16-25A)

Dimension: Height : 50.8 mm / Width : 60.9 mm / Depth : 54.5 mm



W26210

- Module** : 3M
- Function** : Suitable for switching and overload protection of Single Phase Motors.
- Application** : For Domestic, Agricultural and Industrial applications.

Electrical Specification:

- Rated Current : 6-10A, 9-15A, 16-25A
 Rated Voltage : 250V AC
 Nature of Supply : AC 50 / 60 Hz
 Terminal Capacities : 6 sq. mm wire to be used.

Load Specification:

- 6-10A : Single Phase Motors upto 1 HP rating and air conditioners upto 1 ton rating.
- 9-15A : Single Phase Motors upto 2 HP rating and air conditioners upto 1.5 ton rating
- 16-25A : Single Phase Motors upto 25A rating and air conditioners upto 2 ton typical rating

New Infills



VolumeKontrol

Dimension: Height : 50.8 mm / Width : 40.6 mm / Depth : 30 mm



W26528

- Module** : 2 M
- Function** : Controls the audio output linearly.
- Application** : Designed for hotels, residences and commercial establishments.
- Features** : Allows linear variation of audio output.

- Electrical Specification:**
 - Rated : 100 Ohms 3W LIN w/w
 - Amplifier Audio Input (max): 17V-RMS (35W RMS in Ohms)
 - Terminal Capacities : Through flexible leads with connector

BreezeKontrol 5 Step FSC

Dimension: Height : 50.8 mm / Width : 40.6 mm / Depth : 39 mm



W26474

- Module** : 2 M
- Function** : Controls the speed of the Ceiling Fan to "OFF + 5 preset speeds"
- Application** : Ideal to be used for ceiling fans. Best suited for Residences, Banks, Hospitals, Hotels, etc.
- Features** : Suitable for Flush & Surface mounting and can be clipped on to front plates of 2M and above. Eliminates humming noise emanating from fan.

- Electrical Specification:**
 - Voltage rating : 230/240V AC
 - Supply Frequency : 50Hz
 - Fan Load capacity : 120W max
 - Suitable for installation with one ceiling fan only

6M WraparoundPlus Frontplate

Dimension: Height : 86.8 mm / Width : 218.8 mm / Depth : 9.1 mm



W26006OFW

- Module** : 6 M
- Function** : Suitable to mount on flush & surfaces boxes
- Application** : To use in Houses, Hotels and other similar locations.

- Features** : Rectangular profile. Robust design. Compatible with most of standard available metal boxes. Multi directional flexible alignment in the grid covers for shortcomings in box installations.

18M WraparoundPlus Frontplate

Dimension: Height : 222.9 mm / Width : 217.9 mm / Depth : 9.1 mm



W26018GRY

- Module** : 18 M
- Function** : Suitable to mount on flush & surfaces boxes
- Application** : To use in Houses, Hotels and other similar locations.

- Features** : Rectangular profile. Robust design. Compatible with most of standard available metal boxes. Multi directional flexible alignment in the grid covers for shortcomings in box installations.



New Infills

10M Horizontal Wraparound Frontplate

Dimension: Height : 95.0 mm / Width : 247.2 mm / Depth : 7.0 mm



W26110HMGRY

Module : 10 M H
Application : Houses, Hotels, Offices, Hospitals and similar installations.

Features : Smooth curvature of the snap on minimizes dust accumulation. Blends with all kinds of interiors echoing latest trends. Snap on masks fixing screws thereby improving aesthetics.

CAT 5e RJ45

Dimension: Height : 50.8 mm / Width : 20.3 mm / Depth : 33 mm



W27493

Module : 1 M
Function : To allow termination of incoming data cables in computer networks.
Application : Ideal in computer data networks used in offices, hotels and other applications where data cables have to be terminated.

Features : Easy installation/removal due to snap fit feature. Shuttered to prevent dust accumulation.

Electrical Specification:

No. of contacts : 8
Category : CAT 5e
Frequency : 100 MHz
Voltage rating : 125VAC RMS
Current rating : 1.5A
Contact resistance : 0.1ohms max
Insulation resistance : >500 M Ohms
Dielectric strength : 750VAC RMS 60Hz, 1 min
Wiring : AWG 24 - 26

300W LiteKontrol - 2M

Dimension: Height : 50.8 mm / Width : 40.6 mm / Depth : 33.75 mm



W26480

Module : 2 M
Function : Allows to switch ON & Control the brightness of Tungsten Filament Lamps only.
Suitable for Flush & Surface mounting and can be clipped onto front plates of 2M and above.

Application : Best suited for • Hotels • Shopping Malls & Commercial Establishments.

Electrical Specification:

Rated Power : 300 W
Rated Voltage : 230 V
Nature of Supply : AC only

Load Specification:

Maximum Load-300 W Minimum Load-150W, Type of Load - Tungsten Filament Lamp Load only

Footlamp with 5M box and lamp holder

Dimension: Height : 91 mm / Width : 142.91 mm / Depth : 50 mm



W26530

Module : 5M
Function : Serves as a passage way lighting for corridors and staircase
Application : Serves as a passage way lighting for corridors, lobbies, staircase, gardens, guestrooms of hotels, portico, car parking spaces etc.

Feature:

- Mounted on 5M Wraparound front plate.
- Fitted with a lamp holder and is capable of holding 15W incandescent lamp.
- Earth terminal provided.
- Box comes with durable Corrosion resistant finish with standard 20 and 25 mm knockouts.



2 Line RJ 11 Jack

Dimension: Height : 50.8 mm / Width : 20.3 mm / Depth : 15.2 mm



W26492

Module : 1M
Function : To allow termination of incoming DOT lines for Key phones/EPABX system
Application : Voice, ISDN 4 Mbps Token Ring 10 BASE T

Electrical Specification:

No of Contacts	- 4
Category	- 3
Speed of Transmission	- 16mhz 100 ohm UTP Cable size
Rate of Transmission	- 10 Mbps
Compliance to Standards	- FCC Part 68 ANSI/EIA/TIA - 568 TIA TSB - 36 TIA TSB - 40
Attenuation	- 0.4 db

RJ45 Cat6 Computer Jack

Dimension: Height : 50.8 mm / Width : 20.3 mm / Depth : 12.7 mm



W26493

Module : 1M
Function : To allow termination of incoming data cables in computer networks.
Application : Wide application in computer data networks used in offices, hotels and other applications where data cables have to be terminated.

Electrical Specification :

No of Contacts	- 8
Category	- Cat 6
Speed of Transmission	- 250mhz 100 ohm UTP Cable size
Rate of Transmission	- 1 Giga bytes per sec.
Compliance to Standards	- FCC Part 68
Insulation resistance	- >500 M ohm
Current rating	- 150 VAC, 2A
Dielectric withstand voltage	- 1000V, 60Hz/1 min
Contact resistance	- <20 milliohm
DC Resistance	- 0.1 ohm

Twin RJ 11 Telephone Jack

Dimension: Height : 50.8 mm / Width : 20.3 mm / Depth : 15.2 mm



W26494

Module : 1 M
Function : To allow termination of incoming DOT lines for two different phones
Application : To terminate two different telephone lines with two lead termination for each telephone used in houses, hotels, offices & other similar applications.

Electrical Specification:

No of Contacts	- 4
Category	- 3
Speed of Transmission	- 16mhz 100 ohm UTP Cable size
Rate of Transmission	- 10 Mbps
Compliance to Standards	- FCC Part 68 ANSI/EIA/TIA - 568 TIA TSB - 36 TIA TSB - 40
Attenuation	- 0.4 db
Application	- Voice, ISDN 4 Mbps Token Ring 10 BASE T

UPS Accessories - 6/16A Socket

Dimension: Height : 50.8 mm / Width : 60.9 mm / Depth : 35.5 mm



W26424RED

Module : 3 M
Function : Suitable for use in conjunction with IS compliant 6A and 16A 3 pin plugs.
Application : To visually identify and demark UPS powered sockets.

Electrical Specification:

Rated Current	: 16A/6A
Rated Voltage	: 250 V
Nature of Supply	: AC only
Terminal Capacities	: 2.5 Sq.mm wire to be used.
Also available in Black under part code: W26424BLK	



New Infills

UPS Accessories - 6-13A International Socket

Dimension: Height : 50.8 mm / Width : 60.9 mm / Depth : 36.15 mm



W26426BLK

Module : 3 M

Function : Suitable for use in conjunction with standard plugs of all major countries' from 6A upto 13A rating.

Suitable for Flush & Surface mounting and can be clipped on to any MK front plate of 3M and above

Application : To visually identify and demark UPS powered sockets.

Electrical Specification :

Rated Current : 6A upto 13A

Nature of Supply : AC only

Rated Voltage : 230 V

Terminal Capacities : 2.5 Sq.mm wire to be used.

Also available in Red under part code: W26424RED

UPS Accessories - 6A Universal Socket

Dimension: Height : 50.8 mm / Width : 40.6 mm / Depth : 23.2 mm



W26420RED

Module : 2 M

Function : Suitable for use in conjunction with IS compliance 6A - 3 pin, 2 pin and 2 pin flat plugs.

Application : To visually identify and demark UPS powered Sockets.

Electrical Specification:

Rated Current : 6 Amps

Rated Voltage : 250 V

Nature of Supply : AC only

Terminal Capacities : 1.5 Sq.mm wire to be used.

Also available in Black under part code: W26420BLK

UPS Accessories - 6A Switch with indicator

Dimension: Height : 50.8 mm / Width : 20.3 mm / Depth : 29.3 mm



W26403ABLK

Module : 1 M

Function : To make and break electrical supply to a load

Application : To visually identify and demark UPS powered Switch.

Electrical Specification:

Rated Current : 6A

Rated Voltage : 230 V

Nature of Supply : 50 Hz

Terminal Capacities : 1.5 Sq.mm wire to be used.

Also available in Red under part code: W26403ARED

20A Energy Key Switch with Time Delay

Dimension: Height : 50.8 mm / Width : 60.9 mm / Depth : 48.5 mm



W26527

Module : 3M

Function : Serves as master power control for hotel rooms

Features :

- 30 sec time delay for convenience of the guest
- Provision on key tag to stick room numbers
- "Insert Key" marking with LED indicator

Electrical Specification:

Rated Power - 20 A

Rated Voltage - 170 to 250 volts AC

Nature of Supply - 50 Hz

Load - 3500W (Resistive & Inductive)

25A Socket

Dimension: Height : 50.8 mm / Width : 60.9 mm / Depth : 48.5 mm



W26427

Module : 3M

Function : • Suitable for use in 25A / 16A 3 pin plugs.

• Suitable for Flush & Surface mounting and can be clipped on to any front plates of 3M and above

Electrical Specification:

Rated Voltage - 250 V

Rated Current - 25 A

Nature of Supply - AC Only

Terminal Capacities - 4mm² wire to be used



IT Module - Prewired Intel Socket

Dimension: Height : 87 mm / Width : 248 mm



S26110WSA

Module : 10M Horizontal Wraparoundplus frontplate

Function : Suitable to mount on Flush & Surface Boxes

Electrical Specification:

Rated Voltage - 250 V
 Rated Current - 13 A
 Nature of Supply - AC Only
 Terminal Capacities - 2.5mm² wire used

Features:

- Three Intel sockets are pre-wired and inserted with 10M Horizontal frontplate.
- Three wires for Line, Netural & Earth are connected parallelly with the switch.
- Connector is connected with the switch for easy connection purposes.
- Pre-wired Sockets are controlled by 16A Neon Indicator Switch.

IT Module - Prewired 16A Socket

Dimension: Height : 87 mm / Width : 248 mm



S26110WSB

Module : 10M Horizontal Wraparoundplus frontplate

Function : Suitable to mount on Flush & Surface Boxes

Electrical Specification:

Rated Voltage - 250 V
 Rated Current - 13 A
 Nature of Supply - AC Only
 Terminal Capacities - 2.5mm² wire used

Features:

- Three 16A sockets are pre-wired and inserted with 10M Horizontal frontplate.
- Three wires for Line, Netural & Earth are connected parallelly with the switch.
- Connector is connected with the switch for easy connection purposes.
- Pre-wired Sockets are controlled by 16A Neon Indicator Switch.

IT Module - Prewired 6A Socket

Dimension: Height : 87 mm / Width : 248 mm



S26110WSC

Module : 10M Horizontal Wraparoundplus frontplate

Function : Suitable to mount on Flush & Surface Boxes

Electrical Specification:

Rated Voltage - 250 V
 Rated Current - 13 A
 Nature of Supply - AC Only
 Terminal Capacities - 2.5mm² wire used

Features:

- Four 6A sockets are pre-wired and inserted with one blank plan to the 10M Horizontal frontplate.
- Three wires for Line, Netural & Earth are connected parallelly with the switch.
- Connector is connected with the switch for easy connection purposes.
- Pre-wired Sockets are controlled by 16A Neon Indicator Switch.

CAT6 RJ45 Frame

Dimension: Height : 50.8 mm / Width : 20.3 mm



W26500

Module : 1M

Function : A frame that can house Avaya, Krone, AMP Cat 5e & Cat 6 RJ45 jacks/ connectors. Innovative design enables ease of installation - Jacks can be clip fit into this frame.



New Infills

Ivory 6/16A Socket with ISI Rating

Dimension: Height : 50.8 mm / Width : 60.9 mm / Depth : 35.5 mm



37424BWHI

Module : 3 M
Function : Suitable for use in conjunction with ISI compliant 6A and 16A 3 pin plugs.

Electrical Specification:
Rated Current : 16A/6A
Rated Voltage : 250 V
Nature of Supply : AC only
Terminal Capacities : 2.5 Sq.mm wire to be used.

Ivory 1M Dimmer

Dimension: Height : 50.8 mm / Width : 20.3 mm / Depth : 33.75 mm



37480WHI

Module : 1 M
Function : Allows to switch On and control the brightness of tungsten filament lamps only
Suitable for flush and surface mounting and can be clipped onto Ivory range front plates of 1M and above

Electrical Specification:
Rated Current : 200W
Rated Voltage : 230 V
Nature of Supply : AC only
Load Specification: Max. load-200W Min. load-100W
Application: Best suited for Homes, Hotels, Shopping malls and Commercial establishments

Ivory 1M Step FSC

Dimension: Height : 50.8 mm / Width : 20.03 mm / Depth : 30 mm



37471WHI

Module : 1 M
Function : Controls the speed of the fan to four preset speeds.
Application : Ideal to be used for ceiling fans. Best Suited for Residences, Public Utility Buildings like Banks, Hospitals, Hotels etc.

Electrical Specification:
Rated Power - 100 Watts
Rated Voltage - 240 V
Nature of Supply - AC only
Terminal Capacities - Through flexible leads (95 mm) with Connector

Ivory Foot lamp

Dimension: Height : 142 mm / Width : 91 mm / Depth : 50 mm



37530WHI

Module : 5 M
Function : Serves as a passage light way for corridors, lobbies, staircase, gardens, guestrooms of hotels, portico, car parking spaces etc.
Application : Serve as a passage light way for corridors, lobbies, staircase, gardens, guestrooms of hotels, portico, car parking spaces etc.

Feature:

- Mounted on 5M Ivory front plate.
- Fitted with a lamp holder and is capable of holding 15W incandescent lamp.
- Earth terminal provided.
- Box comes with durable Corrosion resistant finish with standard 20 and 25 mm knockouts.

Electrical Specification: Nature of Supply - AC only

Metal / Moulded Box



W26050H

Dimension
Height : 78 mm
Width : 230 mm
Depth : 61 mm



W26179H

Dimension
Height : 86 mm
Width : 246 mm
Depth : 50 mm



37180WHI

Dimension
Height : 155.4 mm
Width : 162.9 mm
Depth : 50 mm



26173D

Dimension
Height : 143 mm
Width : 153.2 mm
Depth : 60 mm



37053

Dimension
Height : 87.2 mm
Width : 102.5 mm
Depth : 50 mm

In order to accommodate all types of accessories and front plates, MK offers metal as well as engineering plastic mounting boxes. Newly added ones are metal & moulded boxes for 10 MH WraparoundPlus plates, deeper moulded box to accommodate high current devices like motor starters and metal / moulded box for 12M Ivory Front Plate.



Plus Points



MK has pioneered several initiatives in Wiring Devices, which has had a significant impact on upgradation of quality and standards of the electrical industry.

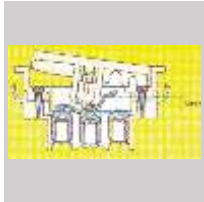
Engineering Plastics

Engineering Plastics are fire retardant and highly resistant to impact and UV radiation there by offering a glossy finish for many years.

Ivory Front Plates

Ivory with the World's 1st Captive Screw Cap ensures that screw caps are fixed to the front plate itself and flips open at the press of your thumb.

Higher module plates are strengthened by metal reinforcements.

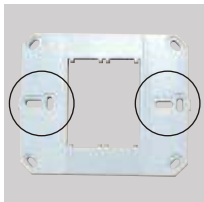


Switch Safety

Positive action rockers and a clear 3mm switch contact gap give dependable isolation and eliminate accidental contact flashes. Ergonomically designed rocker offers smooth switching.

Multidirectional Flexible Alignment

Multi directional flexible alignment in the grid overcomes shortcomings in box installations.



Modular Elegance

Any combination of switches, sockets and accessories can be easily assembled to suit specific requirements and individual's future expansion needs. MK thus provides unique flexibility in assembling, instead of fixed combination of accessories. The modules simply clip-fit into the front plates eliminating visible fixing screws.



Welded Silver Contact

Silver contacts are welded to eliminate the possibility of loose contact over extended usage, minimum arcing and thus improves the longevity of the switch.

Plug Safety

Safety sleeves on plug pins helps prevent accidental contact during use. A unique cord grip ensures effective cable retention.



Positive Terminal Connections

Secure and effective connections for flexible cable and wraparound terminals with rotating washers eliminate cutting of fine strands of wire and improper termination.

Socket Safety

Shuttered sockets ensure extra user safety and prevent prying fingers from accidental contact. The shutters prevent collection of dust in the socket contacts, which in turn reduce any increase in resistance and temperature.

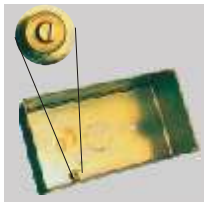


Gold Contacts and Shuttered Jacks

Gold plated contacts in the communication jacks enhance efficient data and voice transmission.

SnapOn Design

AntiQuity and Wraparound SnapOn front plates are dust repulsive and sturdy in design. They possess high structural stability that eliminates stress development.



Positive Earth Connections

Metal boxes are fitted with spin rivetted brass earth terminals for total user safety and are corrosion resistant.

International Standards & ISO

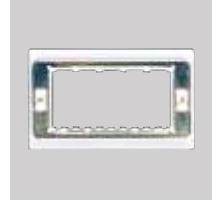
Novar India's range conforms to Novar International norms and appropriate Indian standards (IS 3854: 1997, IS 1293, IS 6538) and has TAC approval. Novar India is the first company in the Indian electrical industry to be accredited with ISO 9001:2000, ISO 14001 and OHSAS 18001.

Novar India has also been awarded the energy and resources institute (TERI) National award for corporate leadership and sustainable initiatives. MK TestCentre is the only one in the industry which has been accredited by NABL & ASTA.



MKTeam

MKTEAM, is a pool of trained professionals providing information and guidance on Electrical Installation products. It symbolizes MK's pioneering efforts in offering personalized solutions to the electrical industry.





Product Selection Chart

Wraparound

Module	1M	2M	3M	4M	5M	6M	8M	10M	10MH	16M
Grid W x H in mm	102 x 89	102 x 89	102 x 89	142 x 91	142 x 91	218 x 95	218 x 95	142 x 150	158 x 67	218 x 164
Fixing Centre in mm	80.75	80.75	80.75	122	122	198	198	121	H-158 V-67	198
White	W26001	W26002	W26003	W26004	W26005	W26006	W26008	W26110	W26110H	W26016
Black	W26001BLK	W26002BLK	W26003BLK	W26004BLK	W26005BLK	W26006BLK	W26008BLK	W26110BLK	W26110HBLK	W26016BLK
OffWhite	W26001OFW	W26002OFW	W26003OFW	W26004OFW	W26005OFW	W26006OFW	W26008OFW	W26110OFW	W26110HOFW	W26016OFW
Grey	W26001GRY	W26002GRY	W26003GRY	W26004GRY	W26005GRY	W26006GRY	W26008GRY	W26110GRY	W26110HGRY	W26016GRY
Metallic Grey	W26001MGRY	W26002MGRY	W26003MGRY	W26004MGRY	W26005MGRY	W26006MGRY	W26008MGRY	W26110MGRY	W26110HMGRY	W26016MGRY

WraparoundPlus

Module	1M	2M	3M	4M	5M	6M	8M	10M	10MH	12M	16M	18M
Grid W x H in mm	102 x 87	102 x 87	116 x 87	142 x 87	143 x 87	247.2 x 95	238 x 87	143 x 156	248 x 87	219 x 156	219 x 156	247.2 x 95
Fixing Centre in mm	81	81	81	121	121	196.50	196	H-121 V-60	H-158 V-67	H-198 V-68	H-198 V-68	H-198 V-68
White	S26001	S26002	S26003	S26004	S26005	S26006	S26008	S26110	S26110H	S26012	S26016	S26018
OffWhite	S26001OFW	S26002OFW	S26003OFW	S26004OFW	S26005OFW	S26006OFW	S26008OFW	S26110OFW	S26110HOFW	S26012OFW	S26016OFW	S26018OFW
Grey	S26001GRY	S26002GRY	S26003GRY	S26004GRY	S26005GRY	S26006GRY	S26008GRY	S26110GRY	S26110HGRY	S26012GRY	S26016GRY	S26018GRY

AntiQuity

Module	1M	2M	3M	4M	5M	8M
Grid W x H in mm	97.3 x 82.5	97.3 x 82.5	112.5 x 82.5	138.4 x 82.5	138.4 x 82.5	233.5 x 82.5
Fixing Centre in mm	80.7	80.7	80.7	120.6	120.6	196.5
Gold	W26361	W26362	W26363	W26364	W26365	W26368
Chroma	W26321	W26322	W26323	W26324	W26325	W26328
Pearl	W26341	W26342	W26343	W26344	W26345	W26348
Brushed Steel	W26331	W26332	W26333	W26334	W26335	W26338

Logic

Module	1M	2M	3M	4M	5M	8M	16M	24M
W x H in mm	102 x 87	102 x 87	102 x 87	143 x 87	143 x 87	220 x 87	226 x 156	225 x 226
Fixing Centre in mm	80.75	80.75	80.75	122	122	198	198	198
Item Code	26001	26002	26003	26004	26005	26008	26016	26024

Ivory

Module	1M	2M	3M	4M	5M	8M	12M
W x H in mm	102 x 89	102 x 89	102 x 89	142 x 91	142 x 91	218 x 95	162.9 x 155.35
Fixing Centre in mm	80.75	80.75	80.75	122	122	198	H-140.6 V-68.65
Item Code	37001WHI	37002WHI	37003WHI	37004WHI	37005WHI	37008WHI	37012WHI

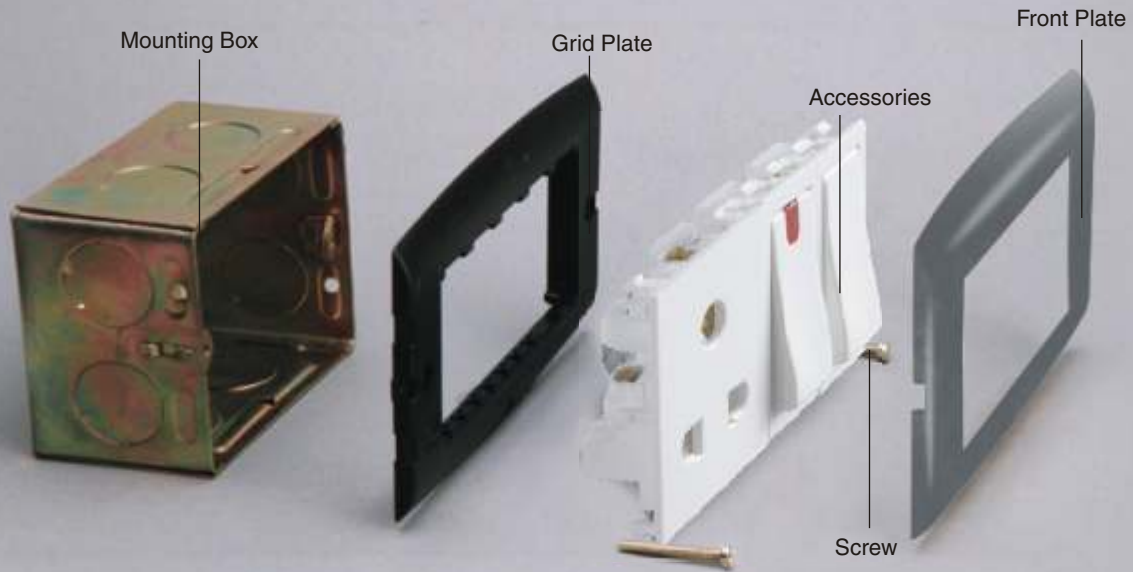


Mounting Box Selection Chart

Module	Item Code	Dimension in mm (L x B x D)	Centre Distance in mm (Horizontal, Vertical)	Plate Module Size	Compatible Front Plate Codes
1, 2	W26042	72 x 72 x 50	60	1 2	W26001, W26001BLK, W26001OFW, W26001GRY, S26001, S26001OFW, S26001GRY W26002, W26002BLK, W26002OFW, W26002GRY, S26002, S26002OFW, S26002GRY
3	W26043 W26073 W26173 26173 26173D 37043 37173WHI	91.5 x 74 x 50 96 x 75 x 37 102.2 x 89.2 x 40 102.5 x 87.2 x 40 102.5 x 87.2 x 53 91.5 x 74 x 50 102.5 x 87.2 x 40	80.75	1 2 3	W26361, W26321, W26331, W26341, 26001, 37001WHI W26362, W26322, W26332, W26342, 26002, 37002WHI W26003, W26003BLK, W26003OFW, W26003GRY, S26003, S26003OFW, S26003GRY, W26363, W26323, W26333, W26343, 26003, 37003WHI
4, 5	W26045 W26075 W26175 26175 37045 37175WHI	131.5 x 74 x 50 137.8 x 75 x 37 142.2 x 91.2 x 40 142 x 87.3 x 40 131.5 x 74 x 50 142 x 87.3 x 40	121	4 5	W26004, W26004BLK, W26004OFW, W26004GRY, S26004, S26004OFW, S26004GRY, W26364, W26324, W26334, W26344, 26004, 37004WHI W26005, W26005BLK, W26005OFW, W26005GRY, S26005, S26005OFW, S26005GRY, W26365, W26325, W26335, W26345, 26005, 37005WHI
6, 8	W26048 W26178 37048 37178WHI	209.5 x 74 x 60 219.6 x 87 x 40 209.5 x 74 x 60 219.6 x 87 x 40	196.5	6 8	S26006, S26006GRY, S26006OFW, W26006, W26006BLK, W26006OFW, W26006GRY W26008, W26008BLK, W26008OFW, W26008GRY, S26008, S26008OFW, S26008GRY, W26368, W26328, W26338, W26348, 26008, 37008WHI
10	W26050	133 x 133 x 50	120.6, 60.5	10	W26110, W26110BLK, W26010OFW, W26010GRY, S26110, S26110OFW, S26110GRY
10H	W26050H W26179H	230 x 78 x 60 246 x 86 x 53	159, 67	10H	S26110H, S26110HOFW, S26110HGRY W26110H, W26110HOFW, W26110HGRY
12	W26056 37053 37180WHI	209.5 x 142 x 60 153.5 x 142 x 60 155.35 x 163 x 53	198 141.68 110	12	S26012, S26012OFW, S26012GRY 37012WHI
16	W26056	209.5 x 142 x 60	198	16	W26016, W26016BLK, W26016OFW, W26016GRY, S26016, S26016OFW, S26016GRY, 26016
24	26064	210 x 211.5 x 60	198	24	26024, S26018, S26018GRY, S26018OFW



Easy Mounting & Installation



MK modular products are easy to install with a scope for future additions.

The accessories fit easily into the nearest matching front plate. You can select the configuration, as per your installation requirements rather than depending on the readymade switch socket combinations available.

In case you wish to replace the module or alter the configuration, just snap off and redesign according to your needs.





Masterseal



The award winning Masterseal range has been specifically designed for use in outdoors or indoors and in areas heavily exposed to dust and splashing water. In the garden, workshop, industry, or farms, there are situations where a supply of electricity, although potentially dangerous, is essential. Scientifically sealed to IP56 and tested by MK well in excess of British Standards, it will protect you and your electric supply in the unfriendliest of environments. Masterseal sockets are unique in that they can seal around virtually any standard plug, allowing safe connection for any appliance.



Waterproof

Protection from strong jets of water from any direction, and protection from dust, sawdust and small particles.

Robust Construction

It will not discolour, crack or fade in UV light (unlike many other plastics).

Temperature Tolerant

Will maintain operation in extremes of heat and cold.

Impact Protection

The Masterseal range is made with polycarbonate, one of the toughest thermoplastics available today, so tough and durable that it's used in motorcycle helmets and car bumpers.



Masterseal Features

The Masterseal range has been specifically designed for use outdoors and indoors and in areas heavily exposed to dust and splashing water.

Why Polycarbonate?

The Masterseal range is made with Polycarbonate, one of the toughest thermoplastics available today so tough and durable that it's used in motorcycle helmets and car bumpers. It will not discolour, crack or fade in UV light (unlike many other plastics)., it has better resistance to chemicals than many other plastics and will maintain its high resistance to impact in extremes of heat and cold.





Masterseal Range

Switches

List Number
56400 GRY



Description
10 AMP SP 1
gang one way

List Number
56401 GRY



Description
10 AMP SP 1
gang two way

List Number
56402 GRY



Description
10 AMP SP 2
gang one way

List Number
56407 GRY



Description
10 AMP SP 1
gang two way
'Bell Push'

List Number
56409 GRY



Description
20 AMP DP 1
gang one way
'Press'

Sockets

List Number
56416 GRY



Description
6/16AMP
3 Pin Socket

Photo Electric (dusk / Dawn) Switch

List Number
56748 GRY



Description
Automatic switch with
fixed ambient light thresholds
and optional adjustable timer

Junction Box

List Number
56506 GRY



Description
Junction box with
four 4 - way terminals

Flush Mounting Bezel

List Number
56502 GRY



Description
1 gang plaster / tile
flush mounting bezel
for use with 56504

20A DP Switch

List Number
56896 BLK



Description
20A DP 1 way
switch (Snap fit)

List Number
56420 GRY



Description
Switch enclosure
for 56896BLK

56896BLK and 56420GRY should be assembled
to get Ingress Protected 20A DP switch

Flush Mounting Frame

List Number
56500 GRY



Description
1 gang plaster / tile
flush mounting frame
with protective cover

Rear Entry Back Box

List Number
56504 GRY



Description
1 gang box rear
conduit entry

Conduit Entries

List Number
56461 BLK



Description
PVC cable entry to
provide direct entry of
power cable to the unit
via the bottom box entry

List Number
56462 BLK



Description
20mm plain conduit entry
push fit adaptor between
back box and 20mm
plain conduit

List Number
56463 BLK



Description
20mm threaded conduit entry
push fit adaptor between
back box and 20mm
threaded conduit

List Number
56464 BLK



Description
Box coupler for
ganging one Masterseal
box next to another



Switches

Technical specifications

Electrical

Voltage rating: 250V a.c, 50 Hz
 Current Rating: 10 or 20 amps- no derating when used on fluorescent or inductive loads.

Load Type: No Restriction

Physical

Ambient operating temperature: -0°C to + 40°C
 IP Rating: IP 56
 Max. Installation Altitude: 2000 Meters

Standards and approvals

Switches and enclosures comply with BS EN 60669-1:2000 and are IP56 for BS EN 60529: 1992
 20A Switch module complies with BS 3676: Part 1: 1989
 10A switch module complies with BS EN 60669-1: 2000
 All products comply with or allow compliance with the 16th Edition of the IEE Wiring Regulations (BS 7671)

Description

A range of switches and enclosures specifically designed for use outdoors or in areas heavily exposed to dust and/or splashing water. Constructed from extremely robust polycarbonate, the range is sealed to IP56 against dust, water and is impact resistant. Masterseal is easy to install and the large rocker switches and clip in moulds make it easy to use, even when wearing heavy gloves.

Photo Electric (Dusk/Dawn) Switch



Standards and approvals

ICE 60669-2-1
 IP56 to BS EN.60529: 1992
 BS EN.50081-1 BS EN.50082-1



Technical specifications

Voltage Rating: 230V a.c. 50Hz
 Current Rating: Single pole 6 amp resistive
 1000W Tungsten GLS
 1000W Tungsten Halogen
 1200W Fluorescent (without PF correction)
 100 µf max. load capacitance
 NORMAL LIGHT LEVEL THRESHOLDS:
 25 lux ON, 40 lux OFF
 Optional timer adjustable from 1-15 hours (nominal)

Description

Masterseal photo electric switch will automatically switch on at dusk and off at dawn. Alternatively, an optional user adjustable time period can be used to switch the load OFF before dawn, if required.
 This product is not suitable for use with low energy, compact, fluorescent lamps.

Photo Electric Switch Wiring

- If a manual ON or manual OFF override switch is required, wire the switch as shown in Figure 1.
 Note: The photo electric switch will not operate automatically if the override switch is used.
- The earth terminals in the box may be used for earth continuity and bonding purposes
- Set the Timer Control switch to OFF for basic dusk/dawn operation and to ON for the timed dusk/dawn operation.

Figure 1

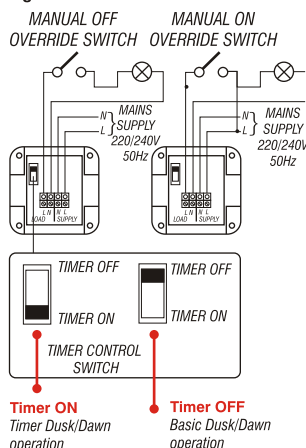


Photo Electric Switch Operation

The photo electric switch has two modes of operation:

Basic Dusk/Dawn Operation

The controlled lighting switches ON at dusk and OFF at dawn. Time control switch is set to OFF.

Timed Dusk/Dawn Operation

Timer Control switch is set to ON. Set the Time ON period between 1 and 15 hours approximately, refer to Figure 2. Rotating the control in a clockwise direction increases the TIME ON period. It may be necessary to make small adjustments over a period of days until the required TIME ON period is obtained.

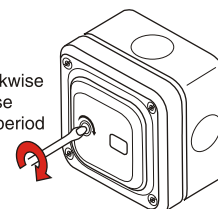
The lighting will switch off after the period has expired or at dawn which ever occurs first.

Note: The mode of operation is selected using the Timer Control slider switch mounted on the PCB at the rear of the front plate.

The controlled lighting is switched on for approximately 45 seconds after restoring the mains supply regardless of the ambient light conditions.

Figure 2

Turn clockwise to increase Time on period



Socket Outlets

Technical specifications

Electrical

Voltage rating: 250V a.c
 Current Rating: 6/16A per socket outlet
 Terminal Capacity: Live, neutral & earth
 3 x 2.5 mm²
 3 x 4 mm²
 2 x 6 mm² (standard)

Physical

Ambient operating temperature:
 -0°C to + 40°C
 IP Rating: IP56
 Max. Installation Altitude: 2000 Meters

Standards and approvals

Socket outlets comply with IS 1293: 88

All products allow compliance with the 16th edition of the IEE Wiring Regulations (BS 7671) when correctly installed.

Description

Socket outlets specifically designed for use outdoors or in areas heavily exposed to dust and/or splashing water. Constructed from extremely robust polycarbonate, the range is sealed to IP56 against the dust, water and is impact resistant and will completely protect virtually any 6/16A plug* allowing safe connection to any appliance.

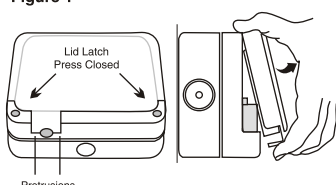
Operation

1. To maintain the IP rating of the product with a plug in position, the lid must be closed and latched with the cable held in position within the cable seal.
2. The product will accept the majority of 6/16A plugs.
3. The cable seal will remain effective at temperature below zero provided a plug is not installed or removed at these temperatures.

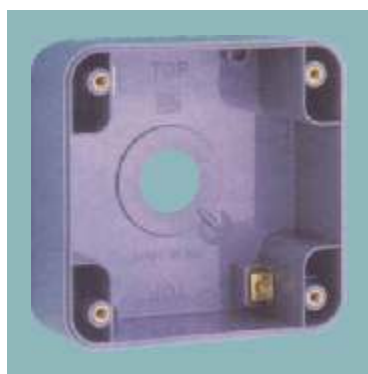
Masterseal plug insertion procedure

1. To open the socket lid, press the protrusions on the bottom of the lid and lift lid, exposing the socket (see Fig. 1)
2. Insert plug as required and close lid, pressing until both the cable outlet latch, and lid latch on the right hand side, are engaged

Figure 1



Back box installation



Plaster/Tile Flush mounting



Flush Mounting Bezel





Masterseal Technical



Polycarbonate Chemical Resistance Table

Key:

▲ Resistant ● Limited resistance ■ Not resistant

Reagent	Concentration	Resistance
Acetic Acid, aqueous	40	■
Acetic Acid, aqueous	5	▲
Acetone		■
Ammonia, aqueous	10	■
Benzene		■
Beverages, alcoholic		▲
Bitumen		Not tested
Bleaching lye, aqueous		■
Boric Acid	10	▲
Butanol		■
Butter		●
Butyric acid		■
Calcium chloride, aqueous	10	▲
Carbon tetrachloride		■
Chlorine gas		●
Chlorine, aqueous solution		■
Chloroform		■
Citric acid, aqueous	10	▲
Coconut oil		▲
Diesel fuel		●
Edible fats		▲
Edible oils		▲
Ethanol	96	▲
Ethylene acetate		■
Ethylene ether		■
Formaldehyde, aqueous	30	▲
Formic acid, aqueous	40	●
Frigen, liquid		Not tested
Fruit juices		▲
Fuel oil (heating)		●
Gas liquor		Not tested
Glycerine		▲
Glycol		▲
Glystantine, aqueous	40	Not tested
Hexane		▲
Hydrochloric acid, aqueous	2	■
Hydrofluoric acid, aqueous	40	▲
Hydrogen peroxide, aqueous	10	▲
Ink		▲
Iodine tincture, alcoholic		■

Reagent	Concentration	Resistance
Kerosene		■
Lactic acid, aqueous	10	▲
Lavender oil		Not tested
Linseed oil		Not tested
Machine oils		▲
Mercury		▲
Methanol		■
Methylene chloride		■
Milk		▲
Mineral oils		▲
Nitric acid, aqueous	2	▲
Oleic acid		▲
Ozone		▲
Paraffin oil		▲
Peppermint oil		Not tested
Perfumes		■
Petrol (gasoline)		●
Phenol, aqueous		■
Phosphoric acid, aqueous	10	■
Potassium hydroxide solution, aqueous	5	■
Potassium hydroxide solution, aqueous	50	■
Rose oil		●
Salt solution, household, aqueous	10	▲
Silicon oils		▲
Soap solution, aqueous		▲
Soda solution, aqueous	10	▲
Sodium hydroxide solution, aqueous	10	■
Sodium, aqueous	10	Not tested
Sulphur		▲
Sulphuric acid, aqueous	10	▲
Tallow		▲
Tar		▲
Tetrachloroethene		■
Toluene		■
Trichlorethane		■
Vaseline		▲
Water		▲
Water, hot (80°C)		●
Wax, melted		Not tested
Xylene		■



The finest architects, interior designers and engineers always recommend MK.
Ask them. Or Contact Customer Care at mkteam@honeywell.com & 044-2616 1234.

Honeywell Electrical Devices and Systems India Limited

Regd Off: 'Crescendo', 995-B, Second Avenue, Annanagar, Chennai - 600 040. India		Telephone: 091 - 44 - 66326789.
E-mail: mkteam@honeywell.com		Website: www.mkelectricindia.com
		Fax: 091 - 44 - 26161235.
BANGALORE	# 301, Prestige Kada, III Floor, # 22, Richmond Road, Bangalore - 560 025.	Telephone: 080 - 64539831/32.
	E-mail: mkbangalore@honeywell.com	Fax: 080 - 2211 3690.
CHENNAI	'Crescendo', 995-B, Second Avenue, Annanagar, Chennai - 600 040.	Telephone: 091 - 44 - 66326678.
	E-mail: mkchennai@honeywell.com	Fax: 091 - 44 - 26161237.
HYDERABAD	Surana House, # 6-3-569/1, 4th Floor, Erramanzil 'X' Roads Khairatabad, Hyderabad - 500 082.	Telephone: 040 - 66410911.
	E-mail: mkhyderabad@honeywell.com	Fax: 040 - 66410930.
KOCHI	41/2553, 2A 2 nd Floor, Metro Palace, Opp. Town Railway Station Kochi - 682 018.	Telephone: 0484 - 2394379.
	E-mail: mkkochin@honeywell.com	Fax: 0484 - 2394732.
KOLKATA	Matrix Tower, DN-24, 4th Floor, Room No.403, Sector-V, Salt lake, Kolkatta - 700 091.	Telephone: 033 - 64566170.
	E-mail: mkkolkatta@honeywell.com	Fax: 033 - 40040962.
MUMBAI	Eco-elite Building, 2nd floor, Marol Maroshi Road, Marol, Next to Zakaria Indl Estate, Andheri (E), Mumbai - 400 059.	Telephone: 022 - 67650680/81.
	E-mail: mkmumbai@honeywell.com	Fax: 022 - 67650682.
NEW DELHI	Plot No. 2-A, Corner Market, Malviya Nagar, New Delhi - 110 017.	Telephone: 011 - 64737433.
	E-mail: mkdelhi@honeywell.com	Fax: 011 - 26673102.

