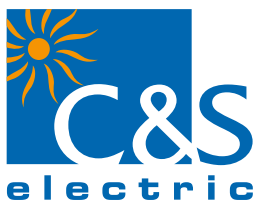


We touch your **electricity** everyday!



Control & Signalling Devices

Contents



Control & Signalling Units - Metal Series

Product Characteristics	4
Non-Illuminated Push Buttons (without contact element)	5
Illuminated Push Buttons (without contact element)	6
Double Push Button & Selector Switch Actuator	7
Selector Actuators - with/without contact element & Pilot Lamps	8
Pilot Lamps, Integrated LED & Double Colour LED	9
Push Button Actuators & Accessories	10~13
Dimensions / Complete Units' Reference	14~15



Control & Signalling Units - Plastic Series

Product Characteristics	18
Non-Illuminated / Illuminated Push Buttons, Selector Switch	19
Illuminated Push Buttons, Selector & Key Switch	20
Pilot Lamps	21
Double Colour LED, Buzzer, Body Assemblies & Contact Elements	22
Assemblies for Illuminated / Non-Illuminated type Push Buttons, Selector Switch & Accessories	23
Push Button Accessories	24
Dimensions / Complete Units' Reference	25~26



Control Stations

Product Characteristics	28
Control Stations (Metal) - Assembled / Empty	29
Push Button (Metal) Operating Heads for Control Stations	30~31
Control Stations (Plastic) - Assembled / Empty	32
Push Button (Plastic) Operating Heads for Control Stations & Dimensions	33~34

Global Certifications





Control & Signalling Devices, Metal Series

Control & Signalling Units ϕ 22.5mm Metal

Product Characteristics

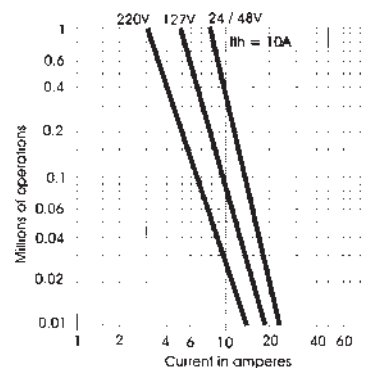
General Characteristics	
Products	Push Buttons, Selector Switches, Key Selector Switches, Latching Mushroom Head Push Buttons, Pilot Lights & Illuminated Push Buttons
Reference Standard	IEC 60947-5-1, EN 60947-5-1, IEC 337-1, UL 508, CSA C-22-2 n° 14
Approval	UL, cUL, CSA, CE
Protection Degree	IP 65 / IP 66 according to IEC 60947-1;
Pollution Degree	3
Temperature	-40°C ~ + 70°C (Storage) -25°C ~ + 70°C (Working)
Vibration Resistance	Ø60mm Mushroom Head Push Buttons: 8g, Other Push Buttons & Pilot Lights: 15g (40Hz<frequency<500 Hz) conforming to IEC 68-2-6
Shock Resistance	Push Buttons : 70g, Mushroom Head Push Buttons: 15g, Selector Switches : 200g conforming to IEC 68-2-27
Working Position	All working positions are allowed
Mechanical Life Push Buttons	Push Buttons & Selector Switches 1 million operations, Latching Emergency Mushroom 300,000 operations

Contact Elements Characteristics	
Rated Thermal Current I_{th}	10A
Rated Insulation Voltage U_i	500V conforming to IEC 60947-1, UL 508 & CSA 22-2 n° 14
Insulation Category	Group C conforming to NF C 20-040, VDE 0110
Operating Force	Push Buttons - 1 'NO' = 10N, 1 'NC' = 8N Additional contacts - 'NO' = +5N, 'NC' = +3N
Dielectric Strength	2.5KV for 1 minute
Insulation Resistance	2M Ohm min (500 VDC)
Initial Contact Resistance	< 25 milli Ohm
Short Circuits Protection	10A 500V, Cartridge Fuse g1 or N conforming to IEC 337-1
Cabling/Terminal Capacity	1x0.5mm ² ...2x1.5mm ²
Contact Operation	Slow action, Positive Opening
Rated Power	Conforming to IEC 60947-5-1; utilization categories AC 15 & DC 13

Standard Contact Blocks

AC Supply (50/60Hz)

∞ Inductive



DC Supply

Power broken in W

For 1 million operations

Voltage	24V	48V	120V
Inductive Load	65W	48W	40W

AC Ratings, Inductive - NEMA A600

35% Power Factor

Volts	Make Amperes	VA	Break Amperes	VA	Continuous carrying Amperes	Resistive 75% Power factor Make, Break & continuous Amperes
120	60	7200	6	720	10	10
240	30	7200	3	720	10	10
480	15	7200	1.5	720	10	10
600	12	7200	1.2	720	10	10

DC Ratings, NEMA Type Q600

Inductive and resistive

Volts	Make & Break (Amp.)	Continuous (Amp.)
125	0.55	2.5
250	0.27	2.5
600	0.10	2.5

Control & Signalling Units ϕ 22.5mm Metal

Non-Illuminated Push Buttons (Without Contact Element)



RCB2-BA4



RCB2-BL5



RCB2-BP4



RCB2-BC5



RCB2-BS14



RCB2-BA41



RCB2-BS642

Push Button Actuators with Carrier

Description	Knob Size	Colour	Reference
Flush Push Button Spring Return		○ White	RCB2-BA1
		● Black	RCB2-BA2
		● Green	RCB2-BA3
		● Red	RCB2-BA4
		● Yellow	RCB2-BA5
		● Blue	RCB2-BA6
Projecting Push Button		○ White	RCB2-BL1
		● Black	RCB2-BL2
		● Green	RCB2-BL3
		● Red	RCB2-BL4
		● Yellow	RCB2-BL5
		● Blue	RCB2-BL6
Booted Push Button		○ White	RCB2-BP1
		● Black	RCB2-BP2
		● Green	RCB2-BP3
		● Red	RCB2-BP4
		● Yellow	RCB2-BP5
		● Blue	RCB2-BP6
Mushroom Head Push Button Spring Return		● Black	RCB2-BC2
		● Green	RCB2-BC3
		● Red	RCB2-BC4
		● Yellow	RCB2-BC5
		● Blue	RCB2-BC6
		● Red	RCB2-BS54
Mushroom Head Push Button Stay Put (Press to lock, turn to release)	ϕ 40mm ϕ 40mm ϕ 60mm	● Red ● Red	RCB2-BS64
Mushroom Head Push Button Push to stay & pull to release		● Red	RCB2-BT4
Mushroom Head Key Switch, Stay Put, Key removable in both positions (press to lock and key to release)		● Red	RCB2-BS14
Mushroom Head Push Button Stay Put (press to lock, turn to release)	ϕ 30mm	● Red	RCB2-BS44

Push Button Actuators with Carrier & Contact Element

Flush Push Button Spring Return with 1 NO Block		○ White	RCB2-BA11
		● Black	RCB2-BA21
		● Green	RCB2-BA31
		● Red	RCB2-BA41
		● Yellow	RCB2-BA51
		● Blue	RCB2-BA61
Push Button with 1 NC Block		● Red	RCB2-BA42
Projecting Head Push Button with 1 NO Block		○ White	RCB2-BL11
		● Black	RCB2-BL21
		● Green	RCB2-BL31
		● Yellow	RCB2-BL51
		● Blue	RCB2-BL61
Projecting Push Button with 1 NC Block		● Red	RCB2-BL42
Mushroom Head Push Button Stay Put (Press to lock, turn to release) with 1NC Block	ϕ 40mm ϕ 60mm	● Red	RCB2-BS542
		● Red	RCB2-BS642

Illuminated Push Buttons (without contact element)



RCB2-BW447



RCB2-BW346



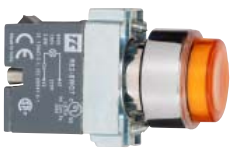
RCB2-BW337



RCB2-BWL357



RCB2-BW166



RCB2-BW157

Mushroom Head Actuators

Description	Knob Size	Colour	Reference
Mushroom head push button (with BA9S Filament Bulb, 130V) 220V AC / DC	ϕ 40mm	● Green	RCB2-BW437
		● Red	RCB2-BW447
2 position Momentary	ϕ 40mm	● Green	RCB2-BW637
		● Red	RCB2-BW647

Push Button Actuators - Illuminated Flush without Series Resistor

Illuminated Actuator, Flush (with BA9S Filament Bulb) 12V, 24V, 48V, 110V AC / DC	○ Clear	RCB2-BW316
	● Green	RCB2-BW336
	● Red	RCB2-BW346
	● Amber	RCB2-BW356
	● Blue	RCB2-BW366
Illuminated Actuator, Flush (with BA9S Neon Bulb) 220V, 380V, 415V AC / DC	○ White	RCB2-BW376
	● Green	RCB2-BWN336
	● Red	RCB2-BWN346
	● Amber	RCB2-BWN356

Push Button Actuators - Illuminated with Series Resistor

Illuminated Actuator, Flush (with BA9S Filament Bulb, 130V) 220V AC / DC	○ Clear	RCB2-BW317
	● Green	RCB2-BW337
	● Red	RCB2-BW347
	● Amber	RCB2-BW357
	● Blue	RCB2-BW367
	○ White	RCB2-BW377

LED Type Push Button Actuator - Illuminated Flush

Flush Illuminated Actuator, with integral circuit and cluster LED, suitable for operating at 240V, 220V, 110V, 48V, 24V & 12V	● Green	RCB2-BWL337
	● Red	RCB2-BWL347
	● Amber	RCB2-BWL357
	● Blue	RCB2-BWL367

Push Button Actuators - Illuminated Projecting without Series Resistor

Illuminated Actuator, Projecting (with BA9S Filament Bulb) 12V, 24V, 48V, 110V AC / DC	○ Clear	RCB2-BW116
	● Green	RCB2-BW136
	● Red	RCB2-BW146
	● Amber	RCB2-BW156
	● Blue	RCB2-BW166
Illuminated Actuator, Projecting (with BA9S Neon Bulb) 220V, 380V, 415V AC / DC	○ White	RCB2-BW176
	● Green	RCB2-BWN136
	● Red	RCB2-BWN146
	● Amber	RCB2-BWN156

Push Button Actuators - Illuminated Projecting with Series Resistor

Illuminated Actuator, Flush (with BA9S Filament Bulb, 130V) 220V AC / DC	○ Clear	RCB2-BW117
	● Green	RCB2-BW137
	● Red	RCB2-BW147
	● Amber	RCB2-BW157
	● Blue	RCB2-BW167
	○ White	RCB2-BW177

Double Push Button & Selector Switch Actuator



RB2-BA87



RB2-BWN96



RCB2-BD2



RCB2-BJ2



RCB2-BK1257



RCB2-BK1246

LED Type Push Button Actuator - Illuminated Projecting

Description	Colour	Reference
Projecting Illuminated Actuator, with integral circuit and cluster LED, suitable for operating at 240V, 220V, 110V, 48V, 24V & 12V	● Green	RCB2-BWL137
	● Red	RCB2-BWL147
	● Amber	RCB2-BWL157
	● Blue	RCB2-BWL167

Double Push Button Actuators - Illuminated Flush without Series Resistor

Description	Colour	Reference
Illuminated Double Push Button, Flush Green & Red Knob Marked I & O respectively (with BA9S Neon Bulb) 220V, 380V, 415V AC / DC	■ Green	RCB2BWN96
	■ Amber	
	■ Red	

Double Push Button Actuators - Illuminated Flush with Carrier

Illuminated Double Push Button, Flush Green & Red Knob Marked I & O respectively	■ Green ■ Red	RCB2-BA87
--	--	-----------

Selector Switch Actuators with Carrier

Description	Type	Operator	Reference
2 Position	Stay Put	Standard Handle	RCB2-BD2
		Long Handle	RCB2-BJ2
	Spring Return to Centre from Right & Left	Standard Handle	RCB2-BDR2
		Long Handle	RCB2-BJR2
3 Position	Stay Put	Standard Handle	RCB2-BD3
		Long Handle	RCB2-BJ3
	Spring Return	Standard Handle	RCB2-BDR3
		Long Handle	RCB2-BJR3

Selector Switch Actuators with Carrier & Contact Element

Description	Reference
2 Position (Stay Put) with 1NO Block	RCB2-BD21
2 Position, Centre 'OFF' (Stay Put) with NO+NC Block	RCB2-BD25
3 Position Centre 'OFF' (Stay Put) with NO+NC Block	RCB2-BD35

Selector Switch Actuators - Illuminated with Series Resistor

Description	Colour	Reference
2 Position Illuminated Selector Switch (with BA9S Filament Bulb, 130V) suitable for operation at 220V AC / DC	● Green	RCB2-BK1237
	● Red	RCB2-BK1247
	● Amber	RCB2-BK1257
3 Position Illuminated Selector Switch (with BA9S Filament Bulb, 130V) suitable for operation at 220V AC / DC	● Green	RCB2-BK1337
	● Red	RCB2-BK1347
	● Amber	RCB2-BK1357

Selector Switch Actuators - Illuminated without Series Resistor

2 Position Illuminated Selector Switch (with BA9S Filament Bulb) 24V, 48V, 110V AC / DC	● Green	RCB2-BK1236
	● Red	RCB2-BK1246
	● Amber	RCB2-BK1256
3 Position Illuminated Selector Switch (with BA9S Filament Bulb) 24V, 48V, 110V AC / DC	● Green	RCB2-BK1336
	● Red	RCB2-BK1346
	● Amber	RCB2-BK1356
2 Position Illuminated Selector Switch (with BA9S Neon Bulb) suitable for operation at 220V, 380V, 415V AC / DC	● Green	RCB2-BKN1236
	● Red	RCB2-BKN1246
	● Amber	RCB2-BKN1256
3 Position Illuminated Selector Switch (with BA9S Neon Bulb) suitable for operation at 220V, 380V, 415V AC / DC	● Green	RCB2-BKN1336
	● Red	RCB2-BKN1346
	● Amber	RCB2-BKN1356

Selector Actuators - With / Without Contact Element & Pilot Lamps



RCB7-BG2



RCB7-BG21



RB2-BE101



RCB2-BVL76



RCB2-BV34



RCB2-BV45

Key Selector Switch Actuators with Carrier

Description	Reference
2 Position Key Switch, Key removable in unactuated position	RCB2-BG2
2 Position Key Switch, Key removable in both position	RCB2-BG4
2 Position Key Switch, Key removable in 'Right Hand' position	RCB2-BG02
3 Position Key Switch, Key removable in Centre 'OFF' position	RCB2-BG3
3 Position Key Switch, Key removable in All position	RCB2-BG0
3 Position Key Switch, Key removable in 'Left Hand' & 'Right Hand' position	RCB2-BG5
3 Position Key Switch, Key removable in 'Left Hand' position	RCB2-BG9
3 Position Key Switch, Key removable in 'Right Hand' position	RCB2-BG09
3 Position (Spring Return) Key Switch, Key removable in 'Centre' position	RCB2-BD37

Key Selector Switch Actuators with Carrier & Contact Element

2 Position Key Switch with 1NO Block, Key removable in unactuated position	RCB2-BG21
2 Position Key Switch with 1NO Block, Key removable in both position	RCB2-BG41
3 Position Key Switch with 1NO+1NC, Key removable in Centre 'OFF' position	RCB2-BG31
3 Position Key Switch with 1NO+1NC, Key removable in All position	RCB2-BG04

Contact Elements - NO / NC

Contact Element 1NO	RB2-BE-101
Contact Element 1NC	RB2-BE-102

Colour Code for Actuator / Lens

Colour Code	1	2	3	4	5	6	7
Colour of Actuator	White	Black	Green	Red	Yellow	Blue	6
Colour of Lens	White	6	Green	Red	Amber	Blue	Clear

LED Type Pilot Lamp

Description	Colour	Reference
Pilot Light integral circuit & cluster LED, suitable for operation at 240V, 220V, 110V, 48V, 24V & 12V AC / DC	● Green	RCB2-BVL73
	● Red	RCB2-BVL74
	● Amber	RCB2-BVL75
	● Blue	RCB2-BVL76
	○ White	RCB2-BVL77

Pilot Lamps with Transformer

Pilot Lamp (with BA9S Filament Bulb) for Input Voltage: 240V AC & Output Voltage: 6V AC	○ Clear	RCB2-BV41
	● Green	RCB2-BV43
	● Red	RCB2-BV44
	● Amber	RCB2-BV45
	● Blue	RCB2-BV46
	○ White	RCB2-BV47
	Pilot Lamp (with BA9S Filament Bulb) for Input Voltage: 110V AC & Output Voltage: 6V AC	○ Clear
● Green		RCB2-BV33
● Red		RCB2-BV34
● Amber		RCB2-BV35
● Blue		RCB2-BV36
○ White		RCB2-BV37

Pilot Lamps with Series Resistor

Pilot Lamp (with BA9S Filament Bulb 130V) 220V AC / DC	○ Clear	RCB2-BV71
	● Green	RCB2-BV73
	● Red	RCB2-BV74
	● Amber	RCB2-BV75
	● Blue	RCB2-BV76
	○ White	RCB2-BV77

Pilot Lamps, Integrated LED & Double Colour LED



RCB2-BVD74



RCB7-IVL73



RCB7-IVL-734■



RB2-KS■

Pilot Lamps with Series Resistor & Diode

Description	Colour	Reference
Pilot Lamp (with BA9S Filament Bulb 130V) 240V AC	Clear	RCB2-BVD71
	● Green	RCB2-BVD73
	● Red	RCB2-BVD74
	● Amber	RCB2-BVD75
	● Blue	RCB2-BVD76
	○ White	RCB2-BVD77

Integrated LED Pilot Lamp

Description	Colour	Reference
Integral LED Pilot Lamp suitable for operating at 110 & 240V, 110 & 220V, 48V, 24V & 12V	Clear	RCB7-IVL71
	● Green	RCB7-IVL73
	● Red	RCB7-IVL74
	● Amber	RCB7-IVL75
	● Blue	RCB7-IVL76
	○ White	RCB7-IVL77
	● Yellow	RCB7-IVL78

Double Colour LED ❖

Description	Application & Supply Voltage	Colour	Reference
Double Colour LED	<ul style="list-style-type: none"> ● Instead of two Pilot Lamps, only one is required. ● When installed with the circuit, during on stage Green will glow and when tripped Red will glow. ● Voltage applied 12V, 24V, 48V, 110V, 240V (AC)(DC) ■ Add supply voltage 	● Red	RCB7-ML-734■
		● Green	
		● Red	RCB7-ML-736■
		● Blue	
		● Red	RCB7-ML-713■
		○ White	
		● Yellow	RCB7-ML-738■
		● Green	
		● Yellow	RCB7-ML-768■
		● Blue	
		● Yellow	RCB7-ML-718■
		○ White	

Buzzer ❖

Description	Application & Supply Voltage	Colour	Reference
Buzzer	Intermittent Sounding Flashing Buzzer 15~20mA, Sound level 80dB. 12V, 24V, 48V, 110V (AC)(DC) 220V DC, 240V AC	● RED	RB2-KS■

Voltage Code for Pilot Lamps

Voltage Code	12V	24V	48V	110V	220V	240V	380V	415V
AC	JA	BA	EA	FA	MA	UA	QA	NA
DC	JD	BD	ED	FD	MD	-	QD	ND

Note:

Please mention supply voltage of Pilot Lamps & Illuminated Push Button with product reference while ordering.

Control & Signalling Units ϕ 22.5mm Metal

Push Button Actuators & Accessories

Operating Heads without Contact Block & Carrier



RB2-BV04



RB2-BA4



RB2-BL4



RB2-BC3



RB2-BS64



RB2-BP4




RB2-BW34

Description	Colour	Reference	
Pilot Lamp Head	Clear	RB2-BV01	
	● Green	RB2-BV03	
	● Red	RB2-BV04	
	● Amber	RB2-BV05	
	● Blue	RB2-BV06	
	○ White	RB2-BV07	
	Flush Push Button	Clear	RB2-BA1
● Black		RB2-BA2	
● Green		RB2-BA3	
● Red		RB2-BA4	
● Amber		RB2-BA5	
● Blue		RB2-BA6	
Projecting Push Button		Clear	RB2-BL1
	● Black	RB2-BL2	
	● Green	RB2-BL3	
	● Red	RB2-BL4	
	● Amber	RB2-BL5	
	● Blue	RB2-BL6	
	Mushroom Spring Return	● Black	RB2-BC2
● Green		RB2-BC3	
● Red		RB2-BC4	
● Amber		RB2-BC5	
● Blue		RB2-BC6	
Mushroom Stay Put		● Red	RB2-BS44
	● Red	RB2-BS54	
	● Red	RB2-BS64	
Mushroom Illuminated - 2 Position Momentary	● Green	RCB2-BW43	
	● Red	RCB2-BW44	
Mushroom Illuminated - 2 Position Maintained	● Green	RCB2-BW63	
	● Red	RCB2-BW64	
Booted Push Button	● Black	RB2-BP2	
	● Green	RB2-BP3	
	● Red	RB2-BP4	
	● Amber	RB2-BP5	
	● Blue	RB2-BP6	
	Double Headed without Light	■ Green ■ Red	RB2-BA87
Double Headed Push Button with Light	■ Green	RB2-BW9	
	■ Amber		
	■ Red		
Illuminated Flush Push Button	● Green	RB2-BW33	
	● Red	RB2-BW34	
	● Amber	RB2-BW35	
	● Blue	RB2-BW36	
	○ White	RB2-BW37	
	Illuminated Projecting Push Button	● Green	RB2-BW33
		● Red	RB2-BW14
● Amber		RB2-BW15	
● Blue		RB2-BW16	
○ White		RB2-BW17	

Push Button Actuators & Accessories

Operating Heads without Contact Block & Carrier

Description	Colour	Reference
Illuminated Selector 2-Position Stay put	 Green	RB2-BK123
	 Red	RB2-BK124
	 Amber	RB2-BK125
Illuminated Selector 3-Position Stay put	 Green	RB2-BK133
	 Red	RB2-BK134
	 Amber	RB2-BK135



RB2-BK124 /
RB2-BK134















RB2-BVL06




RB2-BW14

Operating Heads LED, Neon Pilot Lamp / PB w/o Contact Block & Carrier

Description	Colour	Reference
LED Pilot Lamp Head	 Green	RB2-BVL03
	 Red	RB2-BVL04
	 Amber	RB2-BVL05
	 Blue	RB2-BVL06
LED Illuminating Flush Push Button	 Green	RB2-BWL33
	 Red	RB2-BWL34
	 Amber	RB2-BWL35
	 Blue	RB2-BWL36
LED Illuminating Projecting Push Button	 Green	RB2-BWL13
	 Red	RB2-BWL14
	 Amber	RB2-BWL15
	 Blue	RB2-BWL16

Operating Heads without Contact Block and Carrier

Description	Type	Operator	Reference
Selector 2 Position	Stay Put	Standard Handle	RB2-BD2
		Long Handle	RB2-BJ2
	Spring Return to Centre from Right & Left	Standard Handle	RB2-BDR2
Selector 3 Position	Stay Put	Long Handle	RB2-BJR2
		Standard Handle	RB2-BD3
	Centre OFF	Long Handle	RB2-BJ3
	Spring Return Centre OFF	Standard Handle	RB2-BDR3
Key Selector 2 Position	Stay Put	Long Handle	RB2-BJR3
		Key removable in L.H. position	RB2-BG2
		Key removable in R.H. position	RB2-BG02
		Key removable in both position	RB2-BG4
Key Selector 2 Position	Spring Return Stay put	Key removable in L.H. position	RB2-BG6
Key Selector 3 Position	Stay Put	Key removable in Centre position	RB2-BG3
		Key removable in All position	RB2-BG0
		Key removable in L.H.&R.H. position	RB2-BG5
		Key removable in L. H. position	RB2-BG9
		Key removable in R. H. position	RB2-BG09
		Key removable in both position	RB2-BG7
Mushroom Head	Both side Spring Return Stay Put	Key removable in both position	RB2-BS14 



RB2-BD2



RB2-BJ2



RB2-BG2



RB2-BS14

Accessories

Bulbs



RL1-CF■



RL1-CN■



RB2-BV004



RB2-BP004



RC-S



RCB2AL8R



RCB2AL8H

Description	Supply Voltage	Colour	Reference
Incandescent Filament Lamp (Different wattage for various voltages)	6V, 12V, 24V, 48V, 130V	Clear	RL1-CF■
Neon BA 9s	220V, 380V, 415V	● Green	RL1-CN3■
		● Natural	RL1-CN■

Lenses

Description	Colour	Reference
Set of Lens for (One Inner Diffuser & One outer lens) for Pilot Lamp Head	○ White	RB2-BV001
	● Green	RB2-BV003
	● Red	RB2-BV004
	● Amber	RB2-BV005
	● Blue	RB2-BV006
	○ Clear	RB2-BV007
	Set of Lens for (One Inner Diffuser & One outer lens) for Illuminating Actuator	○ White
● Green		RB2-BW003
● Red		RB2-BW004
● Amber		RB2-BW005
● Blue		RB2-BW006
○ Clear		RB2-BW007
Lenses for Illuminating LED & Neon* Actuator (Without Inner Diffuser)		○ White
	● Green	RB2-BWL003
	● Red	RB2-BWL004
	● Amber	RB2-BWL005
	● Blue	RB2-BWL006
	○ Clear	RB2-BWL007
	● Yellow	RB2-BWL008

Boots

Description	Colour	Reference
Silicon Rubber Boots (for RB2-BP) Suitable for Oil & Humid Condition	○ White	RB2-BP001
	● Black	RB2-BP002
	● Green	RB2-BP003
	● Red	RB2-BP004
	● Yellow	RB2-BP005
	● Blue	RB2-BP006
Boots Suitable for Non-Illuminating Flush Pushbuttons (RB2-BA)	○ Clear	RC-S
Boots Suitable for Illuminated Flush Pushbuttons (RB2-BW)	○ Clear	RC-L

Reset Extended Push Button

Description	Reference
Reset Extended Push Button (Round Type)	RCB2AL8R
Reset Extended Push Button (Hex Type)	RCB2AL8H

- '■' Replace with voltage
- '*' For Neon bulbs, only Green, Red & Amber is available.

Accessories & Legend Plates



RB2-B



RB2-RPX



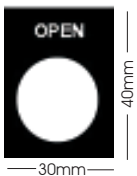
RB2-BZ41M



RB2-QC12



RB2 - K455



RB2-BY



RB2-BYN23**



RB2-B23**



RB2-PY9330

Accessories

Description	Reference
Fixing Collar	RB2-B
Reset Plunger	RB2-RPX
Bulb Extractor for Ba 9s Bulbs	RFB-X13
Quick Connector for NO / NC Contact	RB2-QC12
Spare / Replacement Keys for Key	RB2-K455
Operating Units (Key No. 455)	
Padlocking Attachment	RB2-BZ6
(Makes Flush Operator Inaccessible)	
Panel Adaptor	RB2-BZ41M
Converts 30mm Hole to 22mm Hole	

Legend Plates

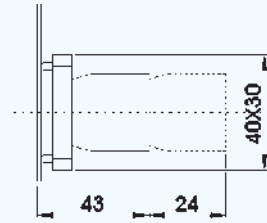
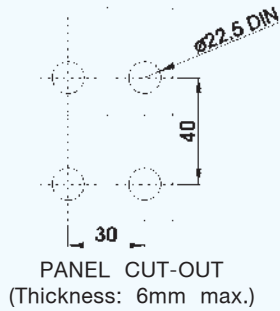
Metal (Aluminium)	Reference
Black Coated Legend Plates with Inscription in White Colour	RB2-BY**
Emergency Stop ϕ 60mm	RB2-AY9330
Emergency Stop ϕ 90mm	RB2-AY8330
Plastic	Reference
Emergency Stop ϕ 60mm	RP2-PY9330
Emergency Stop ϕ 90mm	RP2-PY8330
Legend Holder	RB2-BY32
Legend Plate (Reversible)	RB2-B23**
Legend Plate with Holder	RB2-BYN23**

Legends (Replace ** with...)

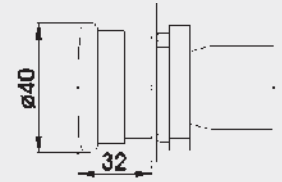
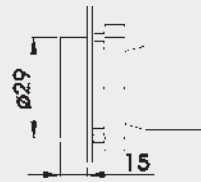
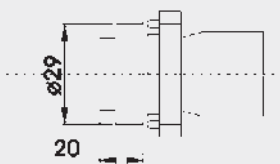
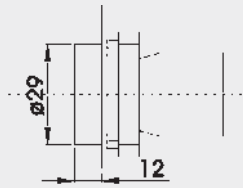
Text	Code	Text	Code
Blank	2301	Emergency Stop	2330
Start	2303	Stop	2304
Forward	2305	Reverse	2306
Up	2307	Down	2308
On	2311	Off	2312
Open	2313	Close	2314
Auto	2315	Hand	2316
Reset	2323	Inch	2321
Slow	2327	Fast	2328
Auto - Hand	2364	Auto - O - Hand	2385
Hand Off Auto	2387	Low	2333
High	2334	High Low	2335
Off On	2336	Stop Start	2337
Up Down	2338		

Control & Signalling Units ϕ 22.5mm Metal

Dimensions / Complete Units' Reference



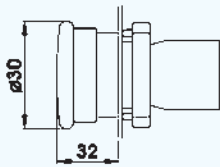
RB2-BE10 \diamond +RB2-B = RCB2-BZ10 \diamond



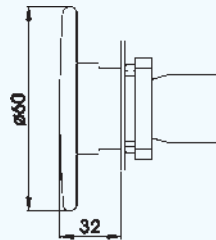
RB2-BA \bullet +RB2-BZ10 \diamond =RCB2-BA \bullet \diamond RB2-BL \bullet +RB2-BZ10 \diamond =RCB2-BL \bullet \diamond
RB2-BA334+RB2-BZ10 \diamond =RCB2-BA334 \diamond

RB2-BP \bullet +RB2-BZ10 \diamond =RCB2-BP \bullet \diamond
RB2-BA \bullet 8+RB2-BZ10 \diamond =RCB2-BA \bullet 8 \diamond

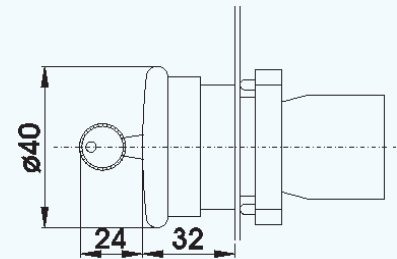
RB2-BC \bullet +RB2-BZ10 \diamond =RCB2-BC \bullet \diamond
RB2-BS54+RB2-BZ10 \diamond =RCB2-BS54 \diamond
RB2-BT4+RB2-BZ10 \diamond =RCB2-BT4 \diamond



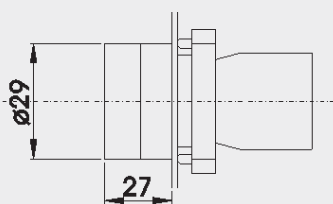
RB2-BS44+RB2-BZ10 \diamond =RCB2-BS44 \diamond



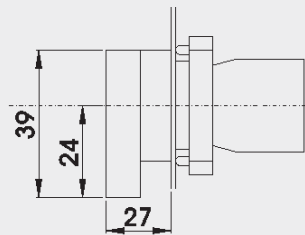
RB2-BR4+RB2-BZ10 \diamond =RCB2-BR4 \diamond
RB2-BS64+RB2-BZ10 \diamond =RCB2-BS64 \diamond



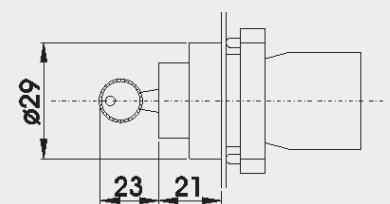
RB2-BS14+RB2-BZ10 \diamond =RCB2-BS14 \diamond



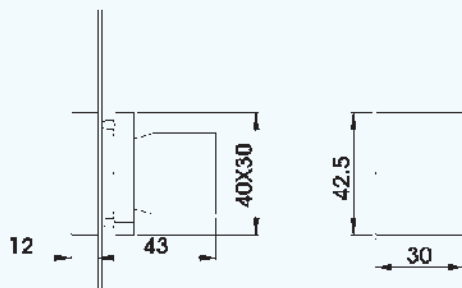
RB2-BD2+RB2-BZ10 \diamond =RCB2-BD2 \diamond
RB2-BD3+RB2-BZ10 \diamond =RCB2-BD3 \diamond



RB2-BJ2+RB2-BZ10 \diamond =RCB2-BJ2 \diamond
RB2-BJ3+RB2-BZ10 \diamond =RCB2-BJ3 \diamond



RB2-BG \diamond +RB2-BZ10 \diamond =RCB2-BG \diamond \diamond
(Replace \diamond with code for position of Key removal & operation pattern)



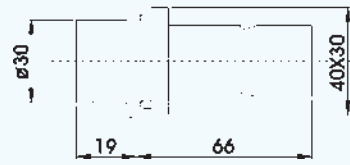
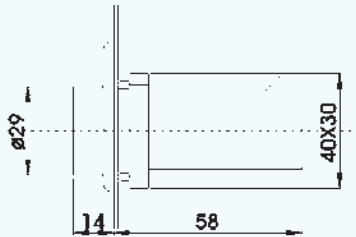
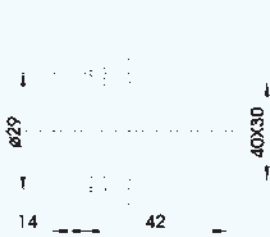
RB2-BA87+RB2-BZ10 \diamond =RCB2-BA87 \diamond

Ordering Codes:

- Replace \diamond with codes for type of contacts (refer page 8) & \bullet with colour codes (refer page 5 & 6)
- For non-illuminated push button heads, selector switches & key switches, refer page 10 & 11

Control & Signalling Units ϕ 22.5mm Metal

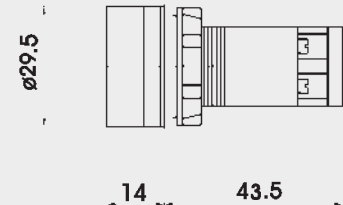
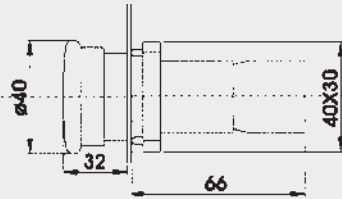
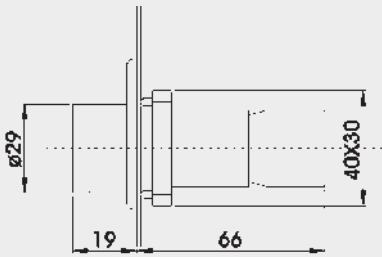
Dimensions / Complete Units' Reference



RB2-BV0●+RB2-BV6 = RCB2-BV6●
 RB2-BV0●+RB2-BVN6 = RCB2-BVN6●
 RB2-BV0●+RB2-BV7 = RCB2-BV7●
 RB2-BV0●+RB2-BVD7 = RCB2-BVD7●
 RB2-BVL0●+RB2-BVL7● = RCB2-BVL7●

RB2-BV0●+RB2-BV3 = RCB2-BV3●
 RB2-BV0●+RB2-BV4 = RCB2-BV4●

RB2-BW5●+RB2-BW06+RB2-BE10◇ = RCB2-BW5●6◇
 RB2-BW5●+RB2-BW07+RB2-BE10◇ = RCB2-BW5●7◇
 RB2-BW5●+RB2-BWD07+RB2-BE10◇ = RCB2-BWD5●7◇
 RB2-BW5●+RB2-BW06+RB2-BE10◇ = RCB2-BW5●6◇



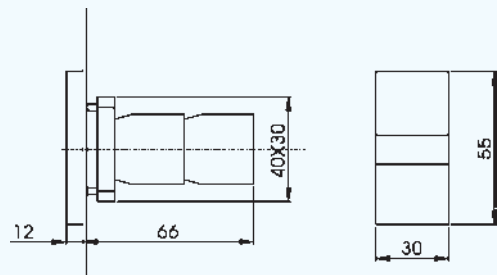
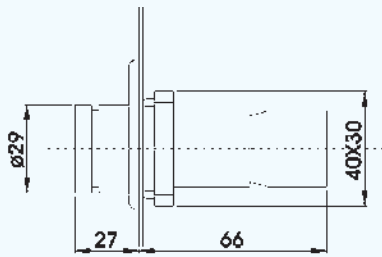
RB2-BW3●+RB2-BW06+RB2-BE10◇ = RCB2-BW3●6◇
 RB2-BW3●+RB2-BW07+RB2-BE10◇ = RCB2-BW3●7◇
 RB2-BW3●+RB2-BWD07+RB2-BE10◇ = RCB2-BWD3●7◇
 RB2-BWL3●+RB2-BWN06●+RB2-BE10◇ = RCB2-BWN3●6◇
 RB2-BWL3●+RB2-BWL7●+RB2-BE10◇ = RCB2-BWL3●7◇

RB2-BW4●+RB2-BW06+RB2-BE10◇ = RCB2-BW4●6◇
 RB2-BW4●+RB2-BW07+RB2-BE10◇ = RCB2-BW4●7◇
 RB2-BW4●+RB2-BWD07+RB2-BE10◇ = RCB2-BWD4●7◇
 RB2-BW4●+RB2-BWN06●+RB2-BE10◇ = RCB2-BWN4●6◇
 RB2-BW4●+RB2-BWL7●+RB2-BE10◇ = RCB2-BWL4●7◇

RB2-BW1●+RB2-BW06+RB2-BE10◇ = RCB2-BW1●6◇
 RB2-BW1●+RB2-BW07+RB2-BE10◇ = RCB2-BW1●7◇
 RB2-BW1●+RB2-BWD07+RB2-BE10◇ = RCB2-BWD1●7◇
 RB2-BWL1●+RB2-BWN06●+RB2-BE10◇ = RCB2-BWN1●6◇
 RB2-BWL1●+RB2-BWL7●+RB2-BE10◇ = RCB2-BWL1●7◇

RB2-BW6●+RB2-BW06+RB2-BE10◇ = RCB2-BW6●6◇
 RB2-BW6●+RB2-BW07+RB2-BE10◇ = RCB2-BW6●7◇
 RB2-BW6●+RB2-BWD07+RB2-BE10◇ = RCB2-BWD6●7◇
 RB2-BW6●+RB2-BWN06●+RB2-BE10◇ = RCB2-BWN6●6◇
 RB2-BW6●+RB2-BWL7●+RB2-BE10◇ = RCB2-BWL6●7◇

RCB7-IL-7●



RB2-BK12●+RB2-BW06+RB2-BE10◇ = RCB2-BK12●6◇
 RB2-BK12●+RB2-BW07+RB2-BE10◇ = RCB2-BK12●7◇
 RB2-BK12●+RB2-BWD07+RB2-BE10◇ = RCB2-BKD12●7◇

RB2-BK13●+RB2-BW06+RB2-BE10◇ = RCB2-BK13●6◇
 RB2-BK13●+RB2-BW07+RB2-BE10◇ = RCB2-BK13●7◇
 RB2-BK13●+RB2-BWD07+RB2-BE10◇ = RCB2-BKD13●7◇

RB2-BW9+RB2-BW06+RB2-BE10◇ = RCB2-BW96◇
 RB2-BW9+RB2-BW07+RB2-BE10◇ = RCB2-BW97◇
 RB2-BW9+RB2-BWD07+RB2-BE10◇ = RCB2-BWD97◇
 RB2-BW9+RB2-BWN065+RB2-BE10◇ = RCB2-BWN965◇
 RB2-BW9+RB2-BWL75+RB2-BE10◇ = RCB2-BWL975◇

Ordering Codes:

- Replace '◇' with codes for type of contacts (refer page 8) & '●' with colour codes (refer page 5 & 6)
- For illuminated push button heads, illuminated selector switches, refer page 10 & 11
- For pilot lamp head, double headed push button with pilot lamp, refer page 7, 8 & 9



Control & Signalling Devices, Plastic Series

Control & Signalling Units ϕ 22.5mm Plastic

Product Characteristics

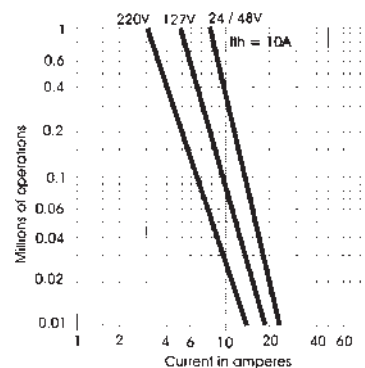
General Characteristics	
Products	Push Buttons, Selector Switches, Key Selector Switches, Latching Mushroom Head Push Buttons, Pilot Lights & Illuminated Push Buttons
Reference Standard	IEC 60947-5-1, EN 60947-5-1, IEC 337-1, UL 508, CSA C-22-2 n° 14
Approval	UL*
Protection Degree	IP 65 / IP 66 according to IEC 60947-1;
Pollution Degree	3
Temperature	-40°C ~ + 70°C (Storage) -25°C ~ + 70°C (Working)
Vibration Resistance	\varnothing 60mm Mushroom Head Push Buttons: 8g, Other Push Buttons & Pilot Lights: 15g (40Hz<frequency<500 Hz) conforming to IEC 68-2-6
Shock Resistance	Push Buttons : 70g, Mushroom Head Push Buttons: 15g, Selector Switches : 200g conforming to IEC 68-2-27
Working Position	All working positions are allowed
Mechanical Life Push Buttons	Push Buttons & Selector Switches 1 million operations, Latching Emergency Mushroom 300,000 operations

Contact Elements Characteristics	
Rated Thermal Current I_{th}	10A
Rated Insulation Voltage U_i	500V conforming to IEC 60947-1, UL 508 & CSA 22-2 n° 14
Insulation Category	Group C conforming to NF C 20-040, VDE 0110
Operating Force	Push Buttons - 1 'NO' = 10N, 1 'NC' = 8N Additional contacts - 'NO' = +5N, 'NC' = +3N
Dielectric Strength	2.5KV for 1 minute
Insulation Resistance	2M Ohm min (500 VDC)
Initial Contact Resistance	< 25 milli Ohm
Short Circuits Protection	10A 500V, Cartridge Fuse g1 or N conforming to IEC 337-1
Cabling/Terminal Capacity	1x0.5mm ² ...2x1.5mm ²
Contact Operation	Slow action, Positive Opening
Rated Power	Conforming to IEC 60947-5-1; utilization categories AC 15 & DC 13

Standard Contact Blocks

AC Supply (50/60Hz)

∞ Inductive



DC Supply

Power broken in W

For 1 million operations

Voltage	24V	48V	120V
Inductive Load	65W	48W	40W

AC Ratings, Inductive - NEMA A600

35% Power Factor

Volts	Make Amperes	VA	Break Amperes	VA	Continuous carrying Amperes	Resistive 75% Power factor Make, Break & continuous Amperes
120	60	7200	6	720	10	10
240	30	7200	3	720	10	10
480	15	7200	1.5	720	10	10
600	12	7200	1.2	720	10	10

DC Ratings, NEMA Type Q600

Inductive and resistive

Volts	Make & Break (Amp.)	Continuous (Amp.)
125	0.55	2.5
250	0.27	2.5
600	0.10	2.5

* Under Approval

Non-Illuminated / Illuminated Push Buttons, Selector Switch



RCP2-BA3



RCP2-BL3



RCP2-BC4



RCP2-BS14



RCP2-BWL347



RCP2-BWL157

Push Button Actuators with Carrier - Non-Illuminated

Description	Knob Size	Colour	Reference
Flush Push Button Spring Return		○ White	RCP2-BA1
		● Black	RCP2-BA2
		● Green	RCP2-BA3
		● Red	RCP2-BA4
		● Yellow	RCP2-BA5
		● Blue	RCP2-BA6
Projecting Push Button Spring Return		○ White	RCP2-BL1
		● Black	RCP2-BL2
		● Green	RCP2-BL3
		● Red	RCP2-BL4
		● Yellow	RCP2-BL5
		● Blue	RCP2-BL6
Mushroom Head Push Button Spring Return		● Black	RCP2-BC2
		● Green	RCP2-BC3
		● Red	RCP2-BC4
		● Yellow	RCP2-BC5
		● Blue	RCP2-BC6
		Mushroom Head Push Button Press to Lock & Turn to Release	ϕ 30mm
Mushroom Head Pushbutton Push to Stay & Key to Release	ϕ 40mm	● Red	RCP2-BS54
	ϕ 60mm	● Red	RCP2-BS64
Mushroom Head Pushbutton Push to Stay & Key to Release	ϕ 40mm	● Red	RCP2-BS14

Push Button Actuators - Illuminated Flush without Series Resistor

Illuminated Actuator, Flush (with BA9 Filament Bulb) 12V, 24V, 48V, 110V AC / DC	○ Clear	RCP2-BW316
	● Green	RCP2-BW336
	● Red	RCP2-BW346
	● Amber	RCP2-BW356
	● Blue	RCP2-BW366
Illuminated Actuator, Flush (with BA9 Neon Bulb) 220V, 380V, 415V AC / DC	○ White	RCP2-BW376
	● Green	RCP2-BWN336
	● Red	RCP2-BWN346
	● Amber	RCP2-BWN356

Push Button Actuators - Illuminated with Series Resistor

Illuminated Actuator, Flush (with BA9S Filament Bulb, 130V) 220V AC / DC	○ Clear	RCP2-BW317
	● Green	RCP2-BW337
	● Red	RCP2-BW347
	● Amber	RCP2-BW357
	● Blue	RCP2-BW367
	○ White	RCP2-BW377

LED Type Push Button Actuator - Illuminated Flush

Flush Illuminated Actuator, with integral circuit and cluster LED, suitable for operating at 240V, 220V, 110V, 48V, 24V & 12V	● Green	RCP2-BWL337
	● Red	RCP2-BWL347
	● Amber	RCP2-BWL357
	● Blue	RCP2-BWL367

LED Type Push Button Actuator - Illuminated Projecting

Projecting Illuminated Actuator, with integral circuit and cluster LED, suitable for operating at 240V, 220V, 110V, 48V, 24V & 12V	● Green	RCP2-BWL137
	● Red	RCP2-BWL147
	● Amber	RCP2-BWL157
	● Blue	RCP2-BWL167

Illuminated Push Buttons, Selector & Key Switch



RCP2-BW156

Push Button Actuators - Illuminated Projecting without Series Resistor

Illuminated Actuator, Projecting (with BA9S Filament Bulb) 12V, 24V, 48V, 110V AC / DC	Clear	RCP2-BW116
	● Green	RCP2-BW136
	● Red	RCP2-BW146
	● Amber	RCP2-BW156
	● Blue	RCP2-BW166
	○ White	RCP2-BW176
Illuminated Actuator, Flush (with BA9S Neon Bulb) 220V, 380V, 415V AC / DC	● Green	RCP2-BWN136
	● Red	RCP2-BWN146
	● Amber	RCP2-BWN156



RCP2-BW157

Push Button Actuators - Illuminated Projecting with Series Resistor

Illuminated Actuator, Flush (with BA9S Filament Bulb, 130V) 220V AC / DC	Clear	RCP2-BW117
	● Green	RCP2-BW137
	● Red	RCP2-BW147
	● Amber	RCP2-BW157
	● Blue	RCP2-BW167
	○ White	RCP2-BW177



RCP2-BD2

Selector Switch Actuators with Carrier

Description	Type	Operator	Reference
2 Position	Stay Put	Standard Handle	RCP2-BD2
		Long Handle	RCP2-BJ2
	Spring Return to Centre from Right & Left	Standard Handle	RCP2-BDR2
3 Position	Stay Put	Long Handle	RCP2-BJR2
		Standard Handle	RCP2-BD3
	Spring Return	Long Handle	RCP2-BJ3
		Standard Handle	RCP2-BDR3
		Long Handle	RCP2-BJR3



RCP2-BG2

Key Selectro Switch Actuators with Carrier

Description	Reference
2 Position Key Switch, Key removable in unactuated position	RCP2-BG2
2 Position Key Switch, Key removable in both position	RCP2-BG4
2 Position Key Switch, Key removable in 'Right Hand' position	RCP2-BG02
2 Position (Spring Return) Key Switch, Key removable in 'Left Hand' position	RCP2-BG6
3 Position Key Switch, Key removable in Centre 'OFF' position	RCP2-BG3
3 Position Key Switch, Key removable in All position	RCP2-BG0
3 Position Key Switch, Key removable in 'Left Hand' & 'Right Hand' position	RCP2-BG5
3 Position Key Switch, Key removable in 'Left Hand' position	RCP2-BG9
3 Position Key Switch, Key removable in 'Right Hand' position	RCP2-BG7

Colour Code for Actuator / Lens

Colour Code	1	2	3	4	5	6	7
Colour of Actuator	White	Black	Green	Red	Yellow	Blue	-
Colour of Lens	White	-	Green	Red	Amber	Blue	Clear

Pilot Lamps



RCP2-BVL74

LED Type Pilot Lamp

Description	Colour	Reference
Pilot Light integral circuit & cluster LED, suitable for operation at 240V, 220V, 110V, 48V, 24V & 12V AC / DC	● Green	RCP2-BVL73
	● Red	RCP2-BVL74
	● Amber	RCP2-BVL75
	● Blue	RCP2-BVL76
	○ White	RCP2-BVL77



RCP2-BV44

Pilot Lamps with Transformer

Pilot Lamp (with BA9S Filament Bulb) for Input Voltage: 240V AC & Output Voltage: 6V AC	○ Clear	RCP2-BV41
	● Green	RCP2-BV43
	● Red	RCP2-BV44
	● Amber	RCP2-BV45
	● Blue	RCP2-BV46
	○ White	RCP2-BV47

Pilot Lamp (with BA9S Filament Bulb) for Input Voltage: 110V AC & Output Voltage: 6V AC	○ Clear	RCP2-BV31
	● Green	RCP2-BV33
	● Red	RCP2-BV34
	● Amber	RCP2-BV35
	● Blue	RCP2-BV36
	○ White	RCP2-BV37



RCP2-BV34

Pilot Lamps with Series Resistor

Pilot Lamp (with BA9S Filament Bulb 130V) 220V AC / DC	○ Clear	RCP2-BV71
	● Green	RCP2-BV73
	● Red	RCP2-BV74
	● Amber	RCP2-BV75
	● Blue	RCP2-BV76
	○ White	RCP2-BV77



RCP2-BVD73

Pilot Lamps with Series Resistor & Diode

Pilot Lamp (with BA9S Filament Bulb 130V) 240V AC	○ Clear	RCP2-BVD71
	● Green	RCP2-BVD73
	● Red	RCP2-BVD74
	● Amber	RCP2-BVD75
	● Blue	RCP2-BVD76
	○ White	RCP2-BVD77

Voltage Code for Pilot Lamps

Voltage Code	12V	24V	48V	110V	220V	240V	380V	415V
AC	JA	BA	EA	FA	MA	UA	QA	NA
DC	JD	BD	ED	FD	MD	-	QD	ND

Double Colour LED, Buzzer , Body Assemblies & Contact Elements



RCB7-IVL-734■



RB2-KS■



RB2-BE101

Double Colour LED ❖

Description	Application & Supply Voltage	Colour	Reference
Double Colour LED	Instead of two Pilot Lamps, only one is required. When installed with the circuit, during on stage Green will glow and when tripped Red will glow. 12V, 24V, 48V, 110V, 240V (AC)(DC)	● Red	RCB7-ML-734■
		● Green	
		● Red	RCB7-ML-736■
		● Blue	
		● Red	RCB7-ML-713■
		○ White	
		● Yellow	RCB7-ML-738■
		● Green	
		● Yellow	RCB7-ML-768■
		● Blue	
		● Yellow	RCB7-ML-718■
		○ White	

Buzzer ❖

Description	Application & Supply Voltage	Colour	Reference
Buzzer	Intermittent Sounding Flashing Buzzer 15~20mA, Sound level 80dB. 12V, 24V, 48V, 110V (AC)(DC) 220V DC, 240V AC	● RED	RB2-KS■

Body assemblies with fixing collar & contact blocks (screw clamp terminal connections)

Description	Contact	Type	Reference
For Push Buttons, Selector and Key Switches	NO	Standard	RP2-BZ101
	NC	Standard	RP2-BZ102
	NO+NO	Standard	RP2-BZ103
	NC+NC	Standard	RP2-BZ104
	NO+NC	Standard	RP2-BZ105
	NO	Gold Flash	RP2-BZ1016
	NC	Gold Flash	RP2-BZ1026
	NO+NO	Gold Flash	RP2-BZ1036
	NC+NC	Gold Flash	RP2-BZ1046
	NO+NC	Gold Flash	RP2-BZ1056

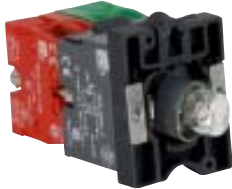
Additional / Replacement Contact Blocks

Description	Contact	Type	Reference
For Making up Body Assemblies with 3, 4, 5 Or maximum of 6 contact blocks Or replacing 1st or 2nd contact	NO	Standard	RB2-BE101
	NC	Standard	RB2-BE102
	NO	Gold Flash	RB2-BE1016
	NC	Gold Flash	RB2-BE1026

- ■ Please mention voltage while ordering
- For accessories refer page 23 & 24
- ❖Not UL approved

Control & Signalling Units ϕ 22.5mm Plastic

Assemblies for Illuminated / Non-Illuminated type Push Buttons & Selector Switch & Accessories



RP2-BW06



RP2-BWL7

Body assemblies for illuminated Push Buttons & Selectors with or w/o Contacts

Description	Supply Voltage	Contact	Colour	Reference	
Direct BA 9s Filament Bulb* Supplied	12V / 24V / 48V / 110V / 130V (AC)(DC) \circ	NO + NC		RP2-BW065■	
		W/O Contact Blocks		RP2-BW06■	
Through Resistor BA 9s, 130V Filament Bulb Supplied	220V (AC)(DC)	NO + NC		RP2-BW075	
		W/O Contact Blocks		RP2-BW07	
Through Resistor & Diode BA 9s 130V Bulb Supplied	240V (AC)	NO + NC		RP2-BWD075	
		W/O Contact Blocks		RP2-BWD07	
Direct BA 9s Neon Bulb Supplied	220V / 380V / 415V (AC)(DC)	NO + NC	● Green	RP2-BWN0635■	
			○ Natural	RP2-BWN0655■	
		W/O Contact Blocks	● Green	RP2-BWN063■	
			○ Natural	RP2-BWN065■	
With Integral Circuit & Cluster LED	12V, 24V, 48V (AC)(DC) 110VAC, 110VDC 240V (AC) 220V (DC)	NO + NC	○ White	RP2-BWL715■	
			● Green	RP2-BWL735■	
			● Red	RP2-BWL745■	
			● Amber	RP2-BWL755■	
			● Blue	RP2-BWL765■	
			○ Clear	RP2-BWL775■	
			● Yellow	RP2-BWL785■	
			W/O Contact Blocks	○ White	RP2-BWL71■
				● Green	RP2-BWL73■
				● Red	RP2-BWL74■
				● Amber	RP2-BWL75■
				● Blue	RP2-BWL76■
				○ Clear	RP2-BWL77■
				● Yellow	RP2-BWL78■

Bulbs

Description	Supply Voltage	Colour	Reference
Incandescent Filament Lamp (Different wattage for various voltages)	6V, 12V, 24V, 48V, 130V	Clear	RL1-CF■
Neon BA 9s	220V, 380V, 415V	● Green	RL1-CN3■
		○ Natural	RL1-CN■



RL1-CF■



RL1-CN■



RP2-BV004

Lenses

Description	Colour	Reference
Set of Lens for (One Inner Diffuser & One outer lens) for Pilot Lamp Head	○ White	RP2-BV001
	● Green	RP2-BV003
	● Red	RP2-BV004
	● Amber	RP2-BV005
	● Blue	RP2-BV006
	○ Clear	RP2-BV007
	Set of Lens for (One Inner Diffuser & One outer lens) for Illuminating Actuator	○ White
● Green		RP2-BW003
● Red		RP2-BW004
● Amber		RP2-BW005
● Blue		RP2-BW006
○ Clear		RP2-BW007
Lenses for Illuminating LED & Neon** Actuator (Without Inner Diffuser)		○ White
	● Green	RP2-BWL003
	● Red	RP2-BWL004
	● Amber	RP2-BWL005
	● Blue	RP2-BWL006
	○ Clear	RP2-BWL007
	● Yellow	RP2-BWL008

- \circ Body assemblies (suitable for bulb 2.6W max.) upto 230V max. available without bulb
- * Bulb rating 12V to 130V, 2.6W (max.);
- For accessories refer page 23 & 24
- ** For Neon Bulbs, only Green, Red & Amber is available
- ■ Please mention voltage while ordering

Control & Signalling Units ϕ 22.5mm Plastic

Push Button Accessories



RP2-B



RB2-RPX



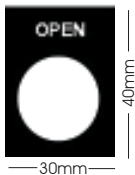
RP2-BZ41M



RB2-QC12



RB2 - K455



RB2-BY



RB2-BYN23**



RB2-B23**



Accessories

Description	Reference
Fixing Collar	RP2-B
Reset Plunger	RB2-RPX
Bulb Extractor for Ba 9s Bulbs	RB2-RPX
Quick Connector for NO / NC Contact	RB2-QC12
Spare / Replacement Keys for Key	RB2-K455
Operating Units (Key No. 455)	
Padlocking Attachment (Makes Flush Operator Inaccessible)	RB2-BZ6
Panel Adaptor Converts 30mm Hole to 22mm Hole	RP2-BZ41M

Legend Plates

Plastic	Reference
Black Coated Legend Plates with Inscription in White Colour	RP2-BY**
Emergency Stop ϕ 60mm	RP2-PY9330
Emergency Stop ϕ 90mm	RP2-PY8330
Legend Holder	RB2-BY32
Legend Plate (Reversible)	RB2-B23**
Legend Plate with Holder	RB2-BYN23**

Legends (Replace ** with...)

Text	Code	Text	Code
Blank	2301	Emergency Stop	2330
Start	2303	Stop	2304
Forward	2305	Reverse	2306
Up	2307	Down	2308
On	2311	Off	2312
Open	2313	Close	2314
Auto	2315	Hand	2316
Reset	2323	Inch	2321
Slow	2327	Fast	2328
Auto - Hand	2364	Auto - O - Hand	2385
Hand Off Auto	2387	Low	2333
High	2334	High Low	2335
Off On	2336	Stop Start	2337
Up Down	2338		

Reset Extended Push Button

Description	Reference
Reset Extended Push Button (Round Type)	RCB2AL8R
Reset Extended Push Button (Hex Type)	RCB2AL8H



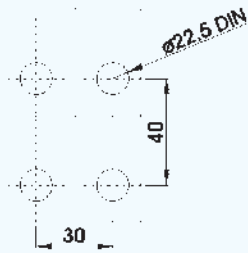
RCB2AL8R



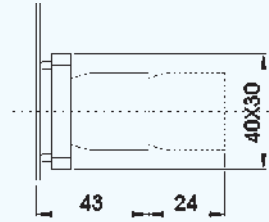
RCB2AL8H

Control & Signalling Units ϕ 22.5mm Plastic

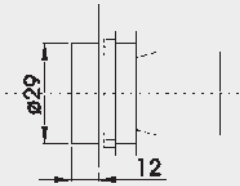
Dimensions / Complete Units' Reference



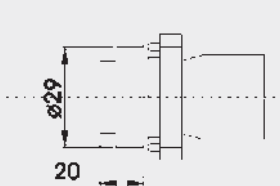
PANEL CUT-OUT
(Thickness: 6mm max.)



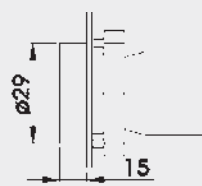
RB2-BE10+RP2-B = RCP2-BZ10



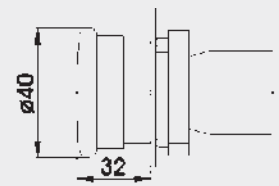
RP2-BA+RP2-BZ10=RCP2-BA
RP2-BA334+RP2-BZ10=RCP2-BA334



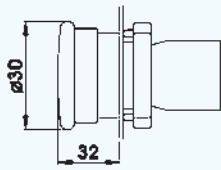
RP2-BL+RP2-BZ10=RCP2-BL



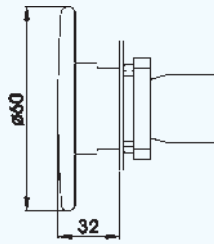
RP2-BA8+RP2-BZ10=RCP2-BA8



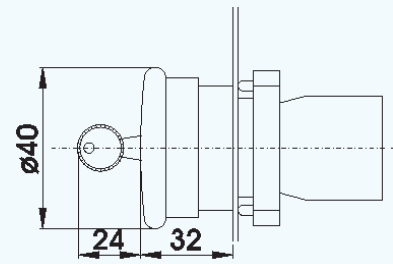
RP2-BC+RP2-BZ10=RCP2-BC
RP2-BS54+RP2-BZ10=RCP2-BS54



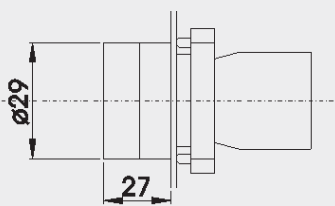
RP2-BS44+RP2-BZ10=RCP2-BS44



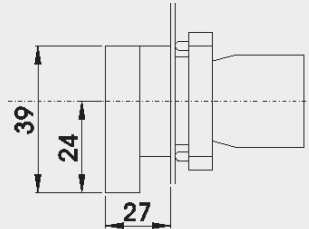
RP2-BR4+RP2-BZ10=RCP2-BR4
RP2-BS64+RP2-BZ10=RCP2-BS64



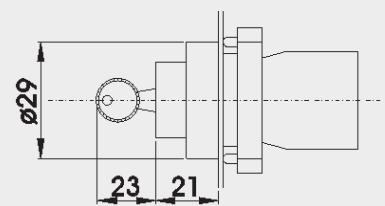
RP2-BS14+RP2-BZ10=RCP2-BS14



RP2-BD2+RP2-BZ10=RCP2-BD2
RP2-BD3+RP2-BZ10=RCP2-BD3



RP2-BJ2+RP2-BZ10=RCP2-BJ2
RP2-BJ3+RP2-BZ10=RCP2-BJ3

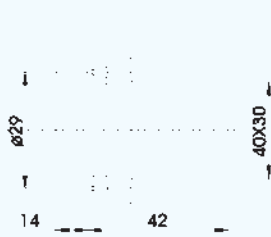


RP2-BG+RP2-BZ10=RCP2-BG
(Replace \diamond with code for position of Key removal & operation pattern)

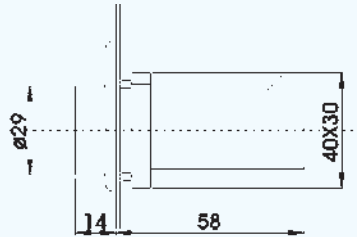
- Replace \diamond with codes for type of contacts (See page 22) & \bullet with colour codes (See page 19 & 20)
- For non-illuminated push button heads, selector switches & key switches, refer page 19 & 20

Control & Signalling Units ϕ 22.5mm Plastic

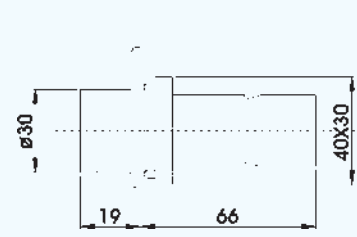
Dimensions / Complete Units' Reference



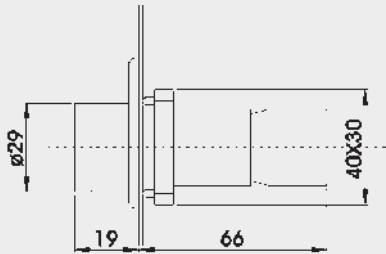
RP2-BV0●+RP2-BV6 = RCP2-BV6●
 RP2-BV0●+RP2-BVN6 = RCP2-BVN6●
 RP2-BV0●+RP2-BV7 = RCP2-BV7●
 RP2-BV0●+RP2-BVD7 = RCP2-BVD7●
 RP2-BVL0●+RP2-BVL7● = RCP2-BVL7●



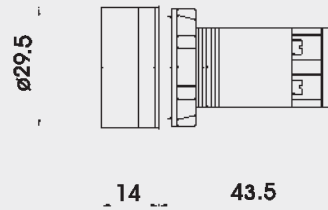
RP2-BV0●+RP2-BV3 = RCP2-BV3●
 RP2-BV0●+RP2-BV4 = RCP2-BV4●



RP2-BW5●+RP2-BW06+RB2-BE10❖ = RCP2-BW5●6❖
 RP2-BW5●+RP2-BW07+RB2-BE10❖ = RCP2-BW5●7❖
 RP2-BW5●+RP2-BWD07+RB2-BE10❖ = RCP2-BWD5●7❖
 RP2-BW5●+RP2-BW06+RB2-BE10❖ = RCP2-BW5●6❖



RP2-BW3●+RP2-BW06+RB2-BE10❖ = RCP2-BW3●6❖
 RP2-BW3●+RP2-BW07+RB2-BE10❖ = RCP2-BW3●7❖
 RP2-BW3●+RP2-BWD07+RB2-BE10❖ = RCP2-BWD3●7❖
 RP2-BWL3●+RP2-BWN06●+RB2-BE10❖ = RCP2-BWN3●6❖
 RP2-BWL3●+RP2-BWL7●+RB2-BE10❖ = RCP2-BWL3●7❖
 RP2-BW1●+RP2-BW06+RB2-BE10❖ = RCP2-BW1●6❖
 RP2-BW1●+RP2-BW07+RB2-BE10❖ = RCP2-BW1●7❖
 RP2-BW1●+RP2-BWD07+RB2-BE10❖ = RCP2-BWD1●7❖
 RP2-BWL1●+RP2-BWN06●+RB2-BE10❖ = RCP2-BWN3●6❖
 RP2-BWL1●+RP2-BWL7●+RB2-BE10❖ = RCP2-BWL3●7❖



RCP7-IVL-7●

- Replace '❖' with codes for type of contacts (See page 22) & '●' with colour codes (See page 19 & 20)
- For illuminated push button heads, refer page 20
- For pilot lamp head, refer page 21



Control Stations

Control Stations

Product Characteristics

General Characteristics	
Products	Control Stations
Reference Standard	IEC 60947-5-1, EN 60947-5-1, IEC 337-1, UL 508, CSA C-22-2 n° 14
Approval	UL, cUL, CSA, CE
Protection Degree	IP 65 / IP 66 (as per IEC), NEMA 4 / 4X (special version)
Ambient Temperature	-40°C ~ + 70°C (Storage) -25°C ~ + 70°C (Operation)
Vibration Resistance	15g (40 Hz < frequency < 500 Hz) conforming to IEC 68-2-6
Shock Resistance	Push Buttons : 70g, Mushroom Head Push Buttons : 15g, Selector Switches : 200g conforming to IEC 68-2-27
Material and Colour	Thermoplastic - grey lid and black base for 1,2,3,4 way, yellow lid & black base for one way Aluminium Die Cast - grey lid and dark grey base
Cable Entry	Knock-outs provided

Control Stations - Metal

Control Stations - Assembled / Empty



RC1M114



RC2M241



RC3M341



RC-2M



RC-1M



RC-4M



RC-3M

Complete Control Stations - Start & Stop Functions Metal, Spring Return

Description	Scheme	Colour	Marking on Legend	Reference
1 Flush Push Button	NO	3	I START	RC 1M 102 RC 1M 103
1 Flush Push Button	NC	4	O STOP	RC 1M 112 RC 1M 114
Latching Push Button	NC	4	STOP	RC 1MBS542 RC 1MYBS542
Mushroom Head Key Switch	NC	4	STOP	RC 1MBS142
2 Flush Push Button	NO+NC	3 4	I O	RC 2M 213
2 Flush Push Button	NO+NC	3 4	START STOP	RC 2M 215

Complete Control Stations - Directional/Movement Metal, Spring Return

2 Flush Push Button	NO +	1	↕	RC 2M 222		
		2	Up-Down	RC 2M 222A		
		1	←→	RC 2M 223		
		2	Right-Left	RC 2M 223A		
		1	Open-Close	RC 2M 241		
3 Flush Push Button	NO +	2	Forward-Reverse	RC 2M 222B		
		NO +	3	Forward Stop Reverse	RC 3M 311	
				4	Up Stop Down	RC 3M 321
					3	Right Stop Left
		NO +	3	Open Stop Close	RC 3M 341	
				1	↕	RC 3M 324
		NO +	4	2	↕	RC 3M 334
					↔	

Empty Control Station Enclosures for customer assembly, Metal

Description	No. of Ways	Colour	Reference
Control Station	1	LID ☐	RC-1M
		BASE ■	
	2	LID ☐	RC-2M
		BASE ■	
	3	LID ☐	RC-3M
		BASE ■	
	4	LID ☐	RC-4M
		BASE ■	

Control Stations - Metal

Push Button Operating Heads for Control Stations

Metal Operating Heads for use with RC•P & RC•M enclosures - IP65



Description	Knob Size	Colour	
Flush Push Button Spring Return		○ White	RM2-BA1
		● Black	RM2-BA2
		● Green	RM2-BA3
		● Red	RM2-BA4
		● Yellow	RM2-BA5
		● Blue	RM2-BA6
		⬆ Black Arrow on White base	RM2-BA334
		⬆ White Arrow on Black base	RM2-BA335
Recess (Guarded) Push Button		○ White	RM2-BA16
		● Black	RM2-BA26
		● Green	RM2-BA36
		● Red	RM2-BA46
		● Yellow	RM2-BA56
		● Blue	RM2-BA66
		Projecting Push Button Spring Return	
● Black	RM2-BL2		
● Green	RM2-BL3		
● Red	RM2-BL4		
● Yellow	RM2-BL5		
● Blue	RM2-BL6		
Booted Push Button Spring Return IP66			
		● Black	RM2-BP2
		● Green	RM2-BP3
		● Red	RM2-BP4
		● Yellow	RM2-BP5
		● Blue	RM2-BP6
		Flush Push Button Spring Return with Transparent Boot IP66	
● Black	RM2-BA28		
● Green	RM2-BA38		
● Red	RM2-BA48		
● Yellow	RM2-BA58		
● Blue	RM2-BA68		
Mushroom Head Push Button Spring Return	ϕ 40mm ϕ 60mm		
		● Green	RM2-BC3
		● Red	RM2-BC4
		● Yellow	RM2-BC5
		● Blue	RM2-BC6
		● Red	RM2-BR4
		Mushroom Head Push Button Turn to Release	ϕ 30mm
ϕ 40mm	● Red		RM2-BS54
ϕ 60mm	● Red		RM2-BS64
Mushroom Head Push Button Key Release - Key No. 455	ϕ 40mm	● Red	RM2-BS14
Mushroom Head Push Button Push to Stay and Pull to Release	ϕ 40mm	● Red (Pre Marked)	RM2-BT4
		● Red	RM2-BT43

Control Stations - Metal

Push Button Operating Heads for Control Stations



RM2-BD2



RM2-BJ2



RM2-BG2



RB2-BE101-BM

Metal Selector Heads for use with RC•P & RC•M enclosures - IP65

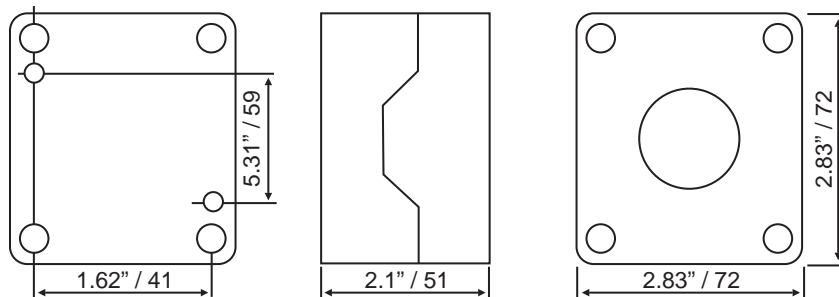
Description	Type	Operator	Reference
2 Position	Stay Put	Standard Handle	RM2-BD2
		Long Handle	RM2-BJ2
	Spring Return	Standard Handle	RM2-BDR2
		Long Handle	RM2-BJR2
3 Position	Stay Put	Standard Handle	RM2-BD3
		Long Handle	RM2-BJ3
	Spring Return	Standard Handle	RM2-BDR3
		Long Handle	RM2-BJR3
	1 Spring Return Right to Centre	Standard Handle	RM2-BD8
		Long Handle	RM2-BJ8
	1 Spring Return Left to Centre	Standard Handle	RM2-BD7
		Long Handle	RM2-BJ7

Metal Key Selector Heads for use with RC•P & RC•M enclosures - IP65

Description	Key Removal	Key Removal	Reference
2 Position Key Switch (Key No. 455)	Stay Put	LH Position	RM2-BG2
		RH Position	RM2-BG02
		All Positions	RM2-BG4
	1 Spring Return Right to Left	LH Position	RM2-BG6
3 Position Key Switch	Stay Put	Centre Position	RM2-BG3
		LH and RH Position	RM2-BG5
		All 3 Positions	RM2-BG0
		RH Position	RM2-BG09
		LH Position	RM2-BG9
	Both Side Spring Return to Centre	Centre Position	RM2-BG7
	Stay Put to Left Spring Return From Right to Centre	Centre Position	RM2-BG8

Contact Blocks (Base Mounted) for use with RC•M enclosures - IP65

Description	Contact	Type	Reference
Contact Blocks	NO	Standard	RB2-BE101-BM
	NC	Standard	RB2-BE102-BM
	NO	Gold Flash	RB2-BE1016-BM
	NC	Gold Flash	RB2-BE1026-BM



Control Stations - Plastic

Control Stations - Assembled / Empty



RC1P114



RC2P241



RC3P341



RC-2P



RC-1P



RC-4P



RC-3P



RC-1PY

Complete Control Stations - Start & Stop Functions Plastic, Spring Return

Description	Scheme	Colour	Marking on Legend	Reference
1 Flush Push Button	NO	3	I START	RC 1P 102 RC 1P 103
1 Flush Push Button	NC	4	O STOP	RC 1P 112 RC 1P 114
Latching Push Button	NC	4	STOP	RC 1PBS542 RC 1PYBS542
Mushroom Head Key Switch	NC	4	STOP	RC 1PBS142 RC 1PYBS142
2 Flush Push Button	NO+NC	3 4	I O	RC 2P 213
2 Flush Push Button	NO+NC	3 4	START STOP	RC 2P 215

Complete Control Stations - Directional/Movement Plastic, Spring Return

2 Flush Push Button	NO +	NO	1	↕	RC 2P 222A	
			2	Up-Down	RC 2P 222A	
			1	↔	RC 2P 223	
			2	Right-Left	RC 2P 223A	
			1	Open-Close	RC 2P 241	
			2	Forward-Reverse	RC 2P 222B	
3 Flush Push Button	NO +	NC +	NO	Forward Stop Reverse	RC 3P 311	
				Up Stop Down	RC 3P 321	
				Right Stop Left	RC 3P 331	
				Open Stop Close	RC 3P 341	
				1	↕	RC 3P 324
				4 2	↔	RC 3P 334

Empty Control Station Enclosures for customer assembly, plastic

Description	No. of Ways	Colour	Reference
Control Station Plastic Enclosure	1	LID ☐ BASE ■	RC-1P
	2	LID ☐ BASE ■	RC-2P
	3	LID ☐ BASE ■	RC-3P
	4	LID ☐ BASE ■	RC-4P
	1	LID ☐ BASE ■	RC-1PY

Control Stations - Plastic

Push Button Operating Heads for Control Stations & Dimensions



RP2-BA3



RP2-BL6



RP2-BA48



RP2-BC2



RP2-BA26



RP2-BD2

Plastic Operating Heads for use with RC●P & RC●M enclosures - IP65

Description	Knob Size	Colour	
Flush Push Button Spring Return		○ White	RP2-BA1
		● Black	RP2-BA2
		● Green	RP2-BA3
		● Red	RP2-BA4
		● Yellow	RP2-BA5
		● Blue	RP2-BA6
		↑ Black arrow on White base	RP2-BA334
		⬇ White arrow on Black base	RP2-BA335
Projecting Push Button Spring Return		○ White	RP2-BL1
		● Black	RP2-BL2
		● Green	RP2-BL3
		● Red	RP2-BL4
		● Yellow	RP2-BL5
		● Blue	RP2-BL6
Flush Push Button Spring Return with Transparent Boot IP66		○ White	RP2-BA18
		● Black	RP2-BA28
		● Green	RP2-BA38
		● Red	RP2-BA48
		● Yellow	RP2-BA58
		● Blue	RP2-BA68
Mushroom Head Push Button Spring Return	ϕ 40mm ϕ 60mm	● Black	RP2-BC2
		● Green	RP2-BC3
		● Red	RP2-BC4
		● Yellow	RP2-BC5
		● Blue	RP2-BC6
		● Red	RP2-BR4
Mushroom Head Push Button Turn to Release	ϕ 30mm ϕ 40mm ϕ 60mm	● Red	RP2-BS44
		● Red	RP2-BS54
		● Red	RP2-BS64
Mushroom Head Pushbutton Key Release - Key No. 455	ϕ 40mm	● Red	RP2-BS14
Recess (Guarded) Push Button		○ White	RP2-BA16
		● Black	RP2-BA26
		● Green	RP2-BA36
		● Red	RP2-BA46
		● Yellow	RP2-BA56
		● Blue	RP2-BA66

Plastic Operating Heads for Selector Switches for use with RC●P & RC●M enclosures - IP65

Description	Type	Operator	Reference
2 Position	Stay Put	Standard Handle	RP2-BD2
		Long Handle	RP2-BJ2
3 Position	Stay Put	Standard Handle	RP2-BD3
		Long Handle	RP2-BJ3
	Spring Return	Standard Handle	RP2-BDR3
		Long Handle	RP2-BJR3
	1 Spring Return Right to Centre	Standard Handle	RP2-BD8
		Long Handle	RP2-BJ8
	1 Spring Return Left to Centre	Standard Handle	RP2-BD7
		Long Handle	RP2-BJ7

Control Stations - Plastic

Push Button Operating Heads for Control Stations & Dimensions

Plastic Operating Heads for Key Switches - IP 65 for use with RC•P & RC•M enclosures - IP65



RP2-BG2

Description	Type	Key removal	Reference
2 Position	Stay Put	LH Position	RP2-BG2
		RH Position	RP2-BG02
		All Positions	RP2-BG4
3 Position	Stay Put	Centre Position	RP2-BG3
		LH and RH Position	RP2-BG5
		All 3 Positions	RP2-BG0
		RH Position	RP2-BG09
		LH Position	RP2-BG9
	Both Side Spring Return To Centre	Centre Position	RP2-BG7
Stay Put To Left Spring Return From Right To Centre	Centre Position	RP2-BG8	



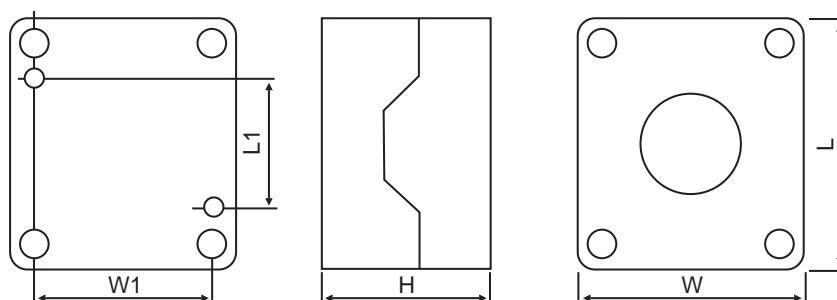
RB2-BE101-BP

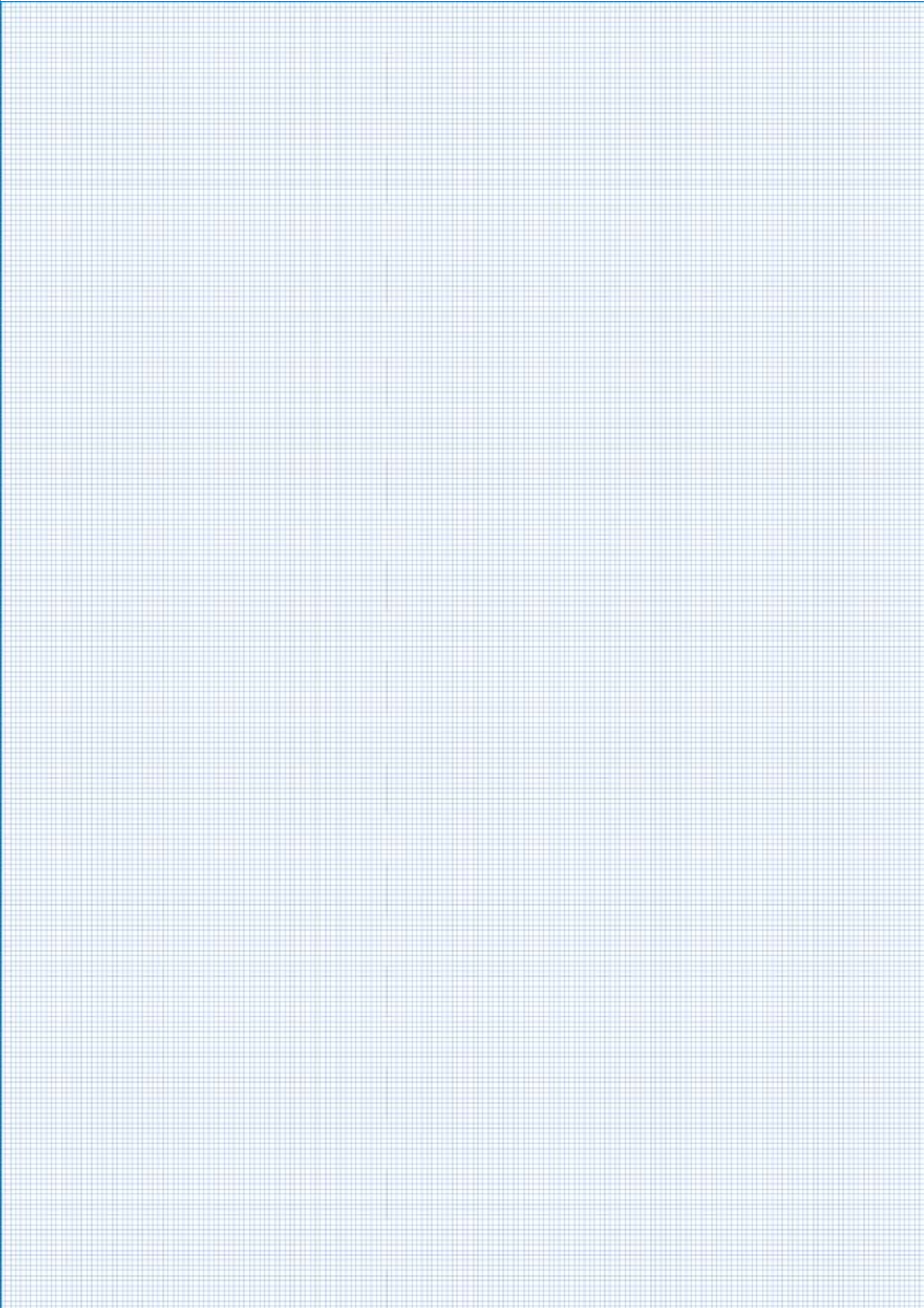
Contact Blocks (Base Mounted) for use with RC•P enclosures - IP65

Description	Contact	Type	Reference
Contact Blocks	NO	Standard	RB2-BE101-BP
	NC	Standard	RB2-BE102-BP
	NO	Gold Flash	RB2-BE1016-BP
	NC	Gold Flash	RB2-BE1026-BP

Dimensions

	Plastic				Metal			
	1 Hole (inch/mm)	2 Hole (inch/mm)	3 Hole (inch/mm)	4 Hole (inch/mm)	1 Hole (inch/mm)	2 Hole (inch/mm)	3 Hole (inch/mm)	4 Hole (inch/mm)
H	2.1" / 51	2.1" / 51	2.1" / 51	2.1" / 51	2.1" / 51	2.1" / 51	2.1" / 51	2.1" / 51
W	2.68" / 68	2.68" / 68	2.68" / 68	2.68" / 68	2.68" / 68	2.68" / 68	2.68" / 68	2.68" / 68
L	2.91" / 74	4.09" / 104	5.28" / 134	6.46" / 164	2.91" / 74	4.13" / 105	5.28" / 134	6.46" / 164
W1	2.13" / 54	2.13" / 54	2.13" / 54	2.13" / 54	2.13" / 54	2.13" / 54	2.13" / 54	2.13" / 54
L1	1.5" / 38	2.68" / 68	2.68" / 68	5.04" / 128	1.31" / 46	3.07" / 78	4.25" / 108	5.43" / 138





Control & Signalling Devices

State of the art Manufacturing Facilities



Haridwar, Noida Ph-I
& Noida Ph-II Plant



C&S Electric Ltd.

Corporate Office : 222, Okhla Industrial Estate, New Delhi - 110 020
Tel. : +91-11-3088 7520 - 29, **Fax:** +91-11-2684 7154, 2682 9063

International Business Division: Tel. : +91-11-4161 3503, 3088 7520-29, **Fax:** +91-11-2683 8291, 2684 7342
email : exports@cselectric.co.in

Central Marketing Office: Tel. : +91-11-3088 7520-29, **Fax:** +91-11-2684 8241, 2684 7342
email : cmo@cselectric.co.in, info@cselectric.co.in

